

## **\$374,900 - 44 Wellington Crescent, Spruce Grove**

MLS® #E4459797

**\$374,900**

4 Bedroom, 2.00 Bathroom, 944 sqft

Single Family on 0.00 Acres

Woodhaven\_SPGR, Spruce Grove, AB

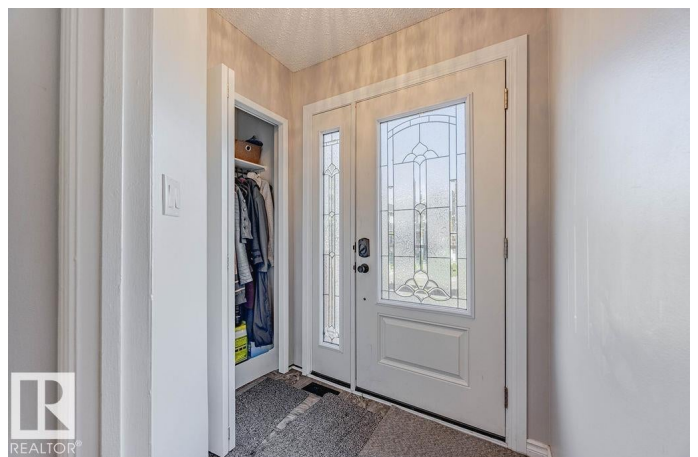
**BACKS SOUTH ONTO A PARK WITH PLAYGROUND!** This spacious and fully upgraded 4 bedrooms, 2 bathrooms raised bungalow is ideally situated in a quaint family-friendly neighbourhood only a block from schools and Spruce Grove's largest park system. Step inside to find a bright living room with a large picture window and a WETT-certified wood-burning fireplace. The brand-new kitchen features stainless-steel appliances, a vented over-the-range microwave, and garburator. The main floor boasts two bedrooms including a generous primary suite with walk-through closet, and a stunningly redone 5-piece bathroom complete with twin sinks, quartz vanity, and lighted mirrors. The downstairs is perfect for children, offering two additional large bedrooms, a huge family room, a new 3-piece bathroom with luxurious 5ft shower, and new washer/dryer with sink. Other upgrades include A/C and furnace, upgraded plumbing so you won't be scalded in the shower, and Energy Star certified windows and doors

Built in 1979

### **Essential Information**

MLS® # E4459797

Price \$374,900



Bedrooms	4
Bathrooms	2.00
Full Baths	2
Square Footage	944
Acres	0.00
Year Built	1979
Type	Single Family
Sub-Type	Detached Single Family
Style	Raised Bungalow
Status	Active

### Community Information

Address	44 Wellington Crescent
Area	Spruce Grove
Subdivision	Woodhaven_SPGR
City	Spruce Grove
County	ALBERTA
Province	AB
Postal Code	T7X 1K2

### Amenities

Amenities	Off Street Parking, Air Conditioner, Closet Organizers, Vinyl Windows, See Remarks
Parking	Parking Pad Cement/Paved

### Interior

Appliances	Dishwasher-Built-In, Dryer, Microwave Hood Fan, Refrigerator, Stove-Electric, Washer, Window Coverings
Heating	Forced Air-1, Natural Gas
Fireplace	Yes
Fireplaces	Mantel
Stories	2
Has Basement	Yes
Basement	Full, Finished

### Exterior

Exterior	Wood, Stucco
Exterior Features	Backs Onto Park/Trees, Fenced, No Back Lane, Schools
Roof	Asphalt Shingles

Construction	Wood, Stucco
Foundation	Concrete Perimeter

**Additional Information**

Date Listed	September 26th, 2025
Days on Market	18
Zoning	Zone 91

DATA IS DEEMED RELIABLE BUT IS NOT GUARANTEED ACCURATE BY THE REALTORS® ASSOCIATION OF EDMONTON. COPYRIGHT 2025 BY THE REALTORS® ASSOCIATION OF EDMONTON. ALL RIGHTS RESERVED.Trademarks are owned or controlled by the Canadian Real Estate Association (CREA) and identify real estate professionals who are members of CREA (REALTOR®, REALTORS®) and/or the quality of services they provide (MLS®, Multiple Listing Service®)

Listing information last updated on October 14th, 2025 at 5:47am MDT