

\$1,550,000 - 226 Saskatchewan, Edmonton

MLS® #E4456238

\$1,550,000

7 Bedroom, 4.00 Bathroom, 2,962 sqft

Single Family on 0.00 Acres

Belgravia, Edmonton, AB

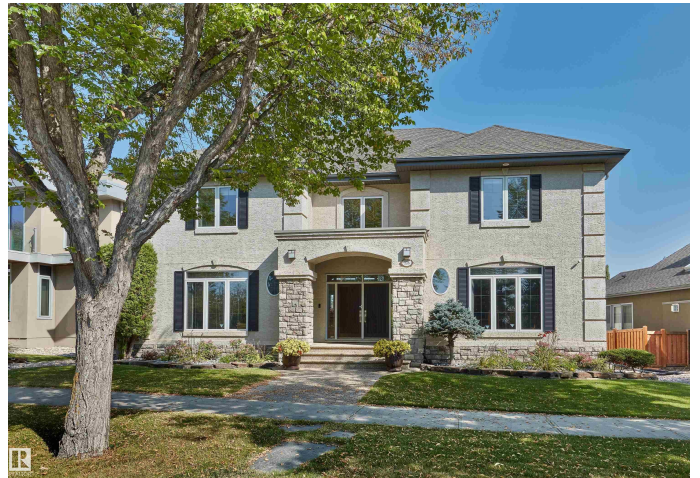
Nestled on prestigious Saskatchewan Dr in Belgravia, this estate residence offers 4,500+ sq. ft. of finished living space w/ stunning views & natural light throughout. The main floor impresses w/ soaring vaulted ceilings, open-concept living & dining areas, a kitchen w/ granite counters & built-in appliances, private office, & mudroom leading to a dbl attached garage. Upstairs, find 4 spacious bdrms, incl. a primary retreat w/ breathtaking views, ensuite, & large walk-in closet. The finished bsmt adds versatility w/ 3 addâ€™™ rooms for bdrms, gym, or flex space, plus rec room, full bath, & storage. Set on an estate-sized 8,250+ sq. ft. lot with/ 77â€™™ frontage, this home is surrounded by newer residences, offering both prestige & long-term comfort w/out the uncertainty of future infill. Beautifully landscaped yard completes this rare opportunity in one of Edmontonâ€™™s most coveted communities! Just seconds from the River Valley, bike lanes, & dog park, with quick access to UofA & UofA Hospital. Don't miss out!

Built in 2005

Essential Information

MLS® # E4456238

Price \$1,550,000



Bedrooms	7
Bathrooms	4.00
Full Baths	4
Square Footage	2,962
Acres	0.00
Year Built	2005
Type	Single Family
Sub-Type	Detached Single Family
Style	2 Storey
Status	Active

Community Information

Address	226 Saskatchewan
Area	Edmonton
Subdivision	Belgravia
City	Edmonton
County	ALBERTA
Province	AB
Postal Code	T6G 2W6

Amenities

Amenities	Air Conditioner, Ceiling 9 ft., Patio, Sprinkler Sys-Underground, 9 ft. Basement Ceiling
Parking	Double Garage Attached

Interior

Interior Features	ensuite bathroom
Appliances	Dishwasher-Built-In, Dryer, Freezer, Garburator, Hood Fan, Oven-Built-In, Oven-Microwave, Refrigerator, Stove-Countertop Electric, Washer, Water Softener
Heating	Forced Air-2, Natural Gas
Stories	3
Has Basement	Yes
Basement	Full, Finished

Exterior

Exterior	Wood, Stone, Stucco
Exterior Features	Back Lane, Fenced, Flat Site, Golf Nearby, Landscaped, Playground Nearby, Public Transportation, River Valley View, Schools, Shopping Nearby, See Remarks

Roof	Asphalt Shingles
Construction	Wood, Stone, Stucco
Foundation	Concrete Perimeter

School Information

Elementary	Belgravia
Middle	McKernan
High	Strathcona

Additional Information

Date Listed	September 5th, 2025
Days on Market	3
Zoning	Zone 15

DATA IS DEEMED RELIABLE BUT IS NOT GUARANTEED ACCURATE BY THE REALTORS® ASSOCIATION OF EDMONTON. COPYRIGHT 2025 BY THE REALTORS® ASSOCIATION OF EDMONTON. ALL RIGHTS RESERVED. Trademarks are owned or controlled by the Canadian Real Estate Association (CREA) and identify real estate professionals who are members of CREA (REALTOR®, REALTORS®) and/or the quality of services they provide (MLS®, Multiple Listing Service®)

Listing information last updated on September 8th, 2025 at 2:02am MDT