

Courtesy Of Chantell Grandy Of RE/MAX Elite

\$199,900 - 105 65 Gervais Road, St. Albert

MLS® #E4455899

\$199,900

1 Bedroom, 1.00 Bathroom, 1,009 sqft
Condo / Townhouse on 0.00 Acres

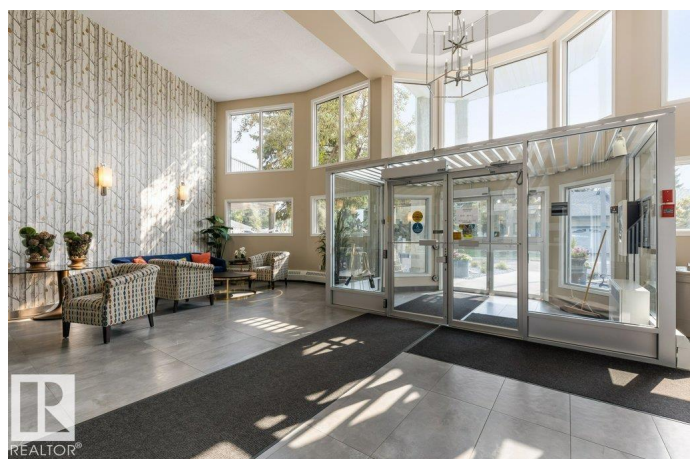
Grandin, St. Albert, AB

Welcome to this charming walkout unit in the friendly Governors Hill complex. Step out onto your private patio and take in the peaceful views of the trees and beautifully landscaped grounds – the perfect spot for your morning coffee or evening unwind. Inside, the open floor plan feels bright and welcoming, with a spacious living and dining area, a cozy gas fireplace, and large windows that let in tons of natural light and overlook the park. The primary bedroom has a generous walk-in closet, and the den with French doors makes a lovely home office, library, or guest space. You’ll also appreciate the extra storage room, in-suite laundry, and your own furnace and hot water heater for year-round comfort. The complex has an inviting front renovated foyer as well as a party room that can be rented. Condo fees include heat, water, and sewer, so you can enjoy a worry-free lifestyle. Plus, the walking trails of Grandin Eco Park are just steps away – perfect for a morning stroll or evening walk.

Built in 1994

Essential Information

MLS® #	E4455899
Price	\$199,900
Bedrooms	1



Bathrooms	1.00
Full Baths	1
Square Footage	1,009
Acres	0.00
Year Built	1994
Type	Condo / Townhouse
Sub-Type	Lowrise Apartment
Style	Single Level Apartment
Status	Active

Community Information

Address	105 65 Gervais Road
Area	St. Albert
Subdivision	Grandin
City	St. Albert
County	ALBERTA
Province	AB
Postal Code	T8N 6H6

Amenities

Amenities	Parking-Plug-Ins, Parking-Visitor, Party Room, Patio, Security Door, Social Rooms, Natural Gas BBQ Hookup
Parking	Stall

Interior

Appliances	Dishwasher-Built-In, Hood Fan, Refrigerator, Stacked Washer/Dryer, Stove-Electric, Window Coverings
Heating	Forced Air-1, Natural Gas
Fireplace	Yes
Fireplaces	Mantel, Tile Surround
# of Stories	4
Stories	4
Has Basement	Yes
Basement	None, No Basement

Exterior

Exterior	Wood, Stucco
Exterior Features	Backs Onto Park/Trees, Flat Site, Landscaped, Park/Reserve, Playground Nearby, Public Transportation, Schools, Shopping Nearby

Roof	Asphalt Shingles
Construction	Wood, Stucco
Foundation	Concrete Perimeter

Additional Information

Date Listed	September 3rd, 2025
Days on Market	61
Zoning	Zone 24
Condo Fee	\$595

DATA IS DEEMED RELIABLE BUT IS NOT GUARANTEED ACCURATE BY THE REALTORS® ASSOCIATION OF EDMONTON. COPYRIGHT 2025 BY THE REALTORS® ASSOCIATION OF EDMONTON. ALL RIGHTS RESERVED. Trademarks are owned or controlled by the Canadian Real Estate Association (CREA) and identify real estate professionals who are members of CREA (REALTOR®, REALTORS®) and/or the quality of services they provide (MLS®, Multiple Listing Service®)

Listing information last updated on November 3rd, 2025 at 5:47am MST