

## **\$499,900 - 10324 164 Avenue, Edmonton**

MLS® #E4450336

**\$499,900**

4 Bedroom, 2.50 Bathroom, 1,231 sqft  
Single Family on 0.00 Acres

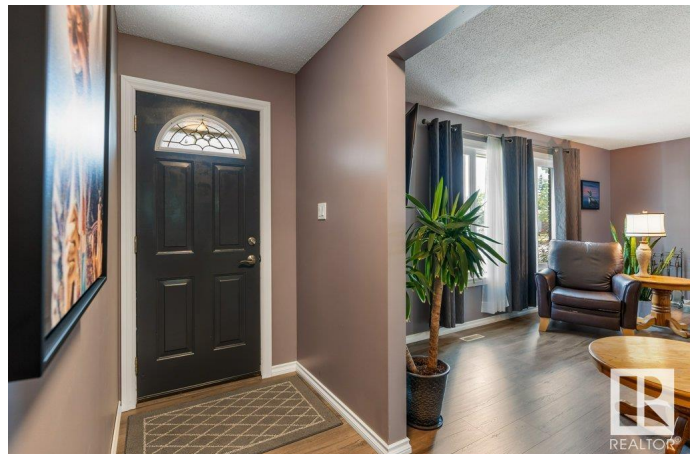
Lorelei, Edmonton, AB

Welcome to this absolutely immaculate & completely upgraded almost 1250sqft bungalow in the sought-after, mature community of Lorelei! This well-designed home features a bright living room w/ wood-burning fireplace, open to the dining area & renovated kitchen complete with white cabinetry, stainless steel appliances, granite counters, glass tile backsplash, and a wall pantry. The spacious primary bedroom has a walk-in closet and 2pc ensuite. Two additional bedrooms and a renovated 4pc bath complete the main level. The fully finished basement offers a large rec room with wet bar, a fourth bedroom, gorgeous spa like 3pc bath with tiled shower and extra storage. Enjoy the backyard oasis with a large deck, gazebo, and meticulous landscaping. The double detached garage and extended driveway offer ample parking. Numerous upgrades include: fresh paint, laminate flooring, triple-pane windows(2015) hot water tank(2024), shingles and siding(2017) & furnace(2008). You will not find a nicer home in a prime location!

Built in 1976

### **Essential Information**

MLS® #	E4450336
Price	\$499,900



Bedrooms	4
Bathrooms	2.50
Full Baths	2
Half Baths	1
Square Footage	1,231
Acres	0.00
Year Built	1976
Type	Single Family
Sub-Type	Detached Single Family
Style	Bungalow
Status	Active

### Community Information

Address	10324 164 Avenue
Area	Edmonton
Subdivision	Lorelei
City	Edmonton
County	ALBERTA
Province	AB
Postal Code	T5X 2E2

### Amenities

Amenities	Deck, See Remarks
Parking	Double Garage Detached

### Interior

Interior Features	ensuite bathroom
Appliances	Dishwasher-Built-In, Dryer, Freezer, Garage Control, Garage Opener, Hood Fan, Oven-Microwave, Refrigerator, Stove-Electric, Vacuum System Attachments, Vacuum Systems, Washer, Window Coverings, TV Wall Mount
Heating	Forced Air-1, Natural Gas
Fireplace	Yes
Fireplaces	Brick Facing
Stories	2
Has Basement	Yes
Basement	Full, Finished

### Exterior

Exterior	Wood, Brick, Vinyl
Exterior Features	Fenced, Flat Site, Landscaped, Playground Nearby, Public Transportation, Schools, Shopping Nearby
Roof	Asphalt Shingles
Construction	Wood, Brick, Vinyl
Foundation	Concrete Perimeter

**Additional Information**

Date Listed	July 30th, 2025
Days on Market	2
Zoning	Zone 27

DATA IS DEEMED RELIABLE BUT IS NOT GUARANTEED ACCURATE BY THE REALTORS® ASSOCIATION OF EDMONTON. COPYRIGHT 2025 BY THE REALTORS® ASSOCIATION OF EDMONTON. ALL RIGHTS RESERVED.Trademarks are owned or controlled by the Canadian Real Estate Association (CREA) and identify real estate professionals who are members of CREA (REALTOR®, REALTORS®) and/or the quality of services they provide (MLS®, Multiple Listing Service®)

Listing information last updated on August 1st, 2025 at 3:02pm MDT