

# \$519,900 - 14 7066 Fane Road, Edmonton

MLS® #E4448104

**\$519,900**

3 Bedroom, 2.50 Bathroom, 1,629 sqft  
Condo / Townhouse on 0.00 Acres

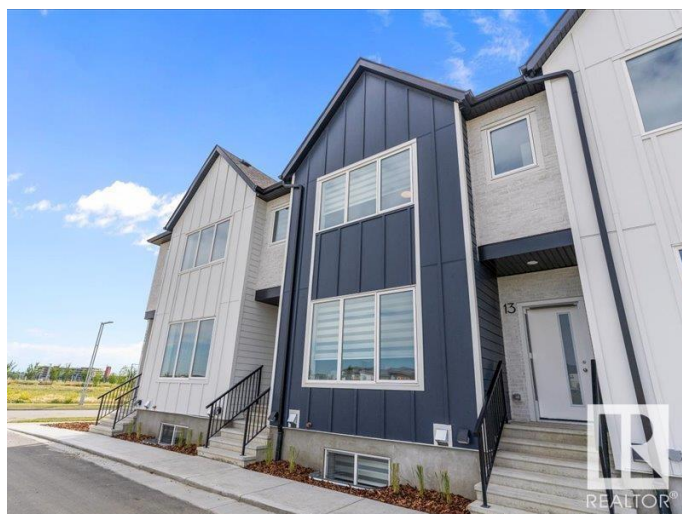
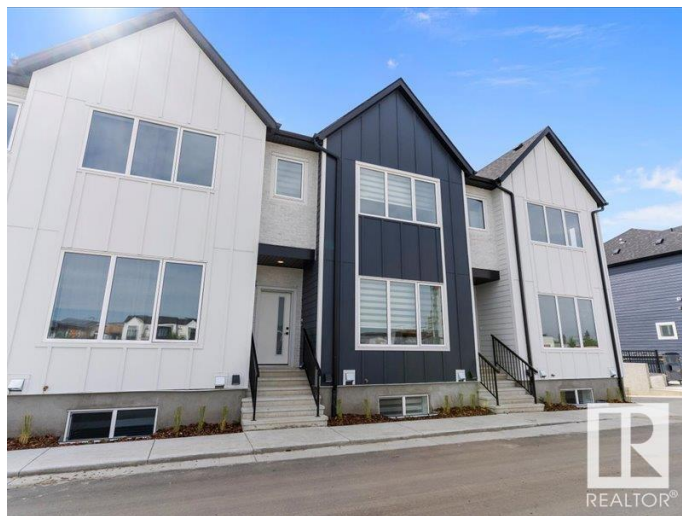
Blatchford Area, Edmonton, AB

Brand New bareland 1628 sq.ft townhouse located in historical Blatchford, just minutes from downtown. Step inside this sophisticated urban oasis with top of the line finishings including 9ft ceilings, luxury vinyl plank flooring, custom Zebra blinds, 4 stainless steel appliances (ceran-top stove), granite countertops & waterfall centre island, gorgeous white cabinets, additional bar area - great for entertaining & extra storage. Upstairs features 3 spacious bedrooms, 2.5 bathrooms all with upgraded fixtures, ensuite has his & her sinks as well as double glass shower. This home is also "Eco friendly" with geothermal heating and cooling system. Fully finished basement is perfect for entertaining, extra bedroom or storage which leads to the double attached garage. This vibrant community is close to Kingsway Mall, grocery stores, restaurants and public transportation. There are 2 parks steps from the front door and an EV Station a couple blocks away. Come see this iconic Edmonton landmark.

Built in 2024

## Essential Information

MLS® #	E4448104
Price	\$519,900
Bedrooms	3



Bathrooms	2.50
Full Baths	2
Half Baths	1
Square Footage	1,629
Acres	0.00
Year Built	2024
Type	Condo / Townhouse
Sub-Type	Townhouse
Style	2 Storey
Status	Active

### Community Information

Address	14 7066 Fane Road
Area	Edmonton
Subdivision	Blatchford Area
City	Edmonton
County	ALBERTA
Province	AB
Postal Code	T5G 3A4

### Amenities

Amenities	Ceiling 9 ft., No Animal Home, No Smoking Home, Parking-Visitor, Patio, Secured Parking, Storage-In-Suite
Parking	Double Garage Attached

### Interior

Interior Features	ensuite bathroom
Appliances	Dishwasher-Built-In, Garage Control, Garage Opener, Microwave Hood Fan, Refrigerator, Stove-Electric, Curtains and Blinds
Heating	Fan Coil, Geo Thermal
Stories	3
Has Basement	Yes
Basement	Full, Finished

### Exterior

Exterior	Wood, Hardie Board Siding
Exterior Features	Flat Site, Low Maintenance Landscape, Park/Reserve, Playground Nearby, Public Transportation, Schools, Shopping Nearby, See Remarks
Roof	Asphalt Shingles

Construction	Wood, Hardie Board Siding
Foundation	Concrete Perimeter

### **Additional Information**

Date Listed	July 16th, 2025
-------------	-----------------

Days on Market	40
----------------	----

Zoning	Zone 08
--------	---------

Condo Fee	\$222
-----------	-------

DATA IS DEEMED RELIABLE BUT IS NOT GUARANTEED ACCURATE BY THE REALTORS® ASSOCIATION OF EDMONTON. COPYRIGHT 2025 BY THE REALTORS® ASSOCIATION OF EDMONTON. ALL RIGHTS RESERVED. Trademarks are owned or controlled by the Canadian Real Estate Association (CREA) and identify real estate professionals who are members of CREA (REALTOR®, REALTORS®) and/or the quality of services they provide (MLS®, Multiple Listing Service®)

Listing information last updated on August 25th, 2025 at 8:47am MDT