

## \$565,000 - 308 36 Avenue, Edmonton

MLS® #E4447695

**\$565,000**

5 Bedroom, 3.50 Bathroom, 1,729 sqft

Single Family on 0.00 Acres

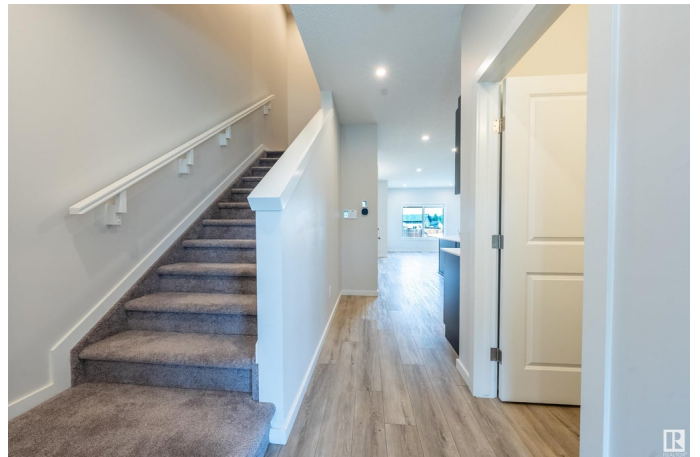
Maple Crest, Edmonton, AB

Welcome to this beautiful single-family home with a legal basement suite, located in the desirable Maple Crest community. The upper floor has never been occupied since the home was purchased, offering a like-new living experience. The main floor features a full bedroom and a half bathroom, a spacious kitchen with granite countertops, plenty of cabinets, and a walk-in pantry. Youâ€™ll also find a bright dining area and a generous living roomâ€”perfect for family gatherings. Upstairs, the master bedroom includes a 4-piece ensuite and a walk-in closet. There are two additional good-sized bedrooms, a bonus room, and another full bathroom. The fully finished legal basement suite includes its own separate entrance, a second kitchen, a second laundry area, a living room, and one bedroomâ€”ideal for rental income or extended family. This property is a must-see!

Built in 2022

### Essential Information

MLS® #	E4447695
Price	\$565,000
Bedrooms	5
Bathrooms	3.50
Full Baths	3
Half Baths	1



Square Footage	1,729
Acres	0.00
Year Built	2022
Type	Single Family
Sub-Type	Detached Single Family
Style	2 Storey
Status	Active

### Community Information

Address	308 36 Avenue
Area	Edmonton
Subdivision	Maple Crest
City	Edmonton
County	ALBERTA
Province	AB
Postal Code	T6T 2P9

### Amenities

Amenities	No Animal Home, No Smoking Home
Parking	Parking Pad Cement/Paved

### Interior

Interior Features	ensuite bathroom
Appliances	Window Coverings, Dryer-Two, Refrigerators-Two, Stoves-Two, Washers-Two, Dishwasher-Two, Microwave Hood Fan-Two
Heating	Forced Air-2, Natural Gas
Stories	3
Has Suite	Yes
Has Basement	Yes
Basement	Full, Finished

### Exterior

Exterior	Wood, Vinyl
Exterior Features	Back Lane, Fenced, Landscaped, Shopping Nearby
Roof	Asphalt Shingles
Construction	Wood, Vinyl
Foundation	Concrete Perimeter

### Additional Information

Date Listed July 14th, 2025

Days on Market 1

Zoning Zone 30

DATA IS DEEMED RELIABLE BUT IS NOT GUARANTEED ACCURATE BY THE REALTORS® ASSOCIATION OF EDMONTON. COPYRIGHT 2025 BY THE REALTORS® ASSOCIATION OF EDMONTON. ALL RIGHTS RESERVED. Trademarks are owned or controlled by the Canadian Real Estate Association (CREA) and identify real estate professionals who are members of CREA (REALTOR®, REALTORS®) and/or the quality of services they provide (MLS®, Multiple Listing Service®)

Listing information last updated on July 15th, 2025 at 6:32pm MDT