

\$829,900 - 5732 Keeping Crescent, Edmonton

MLS® #E4444373

\$829,900

6 Bedroom, 4.00 Bathroom, 2,799 sqft

Single Family on 0.00 Acres

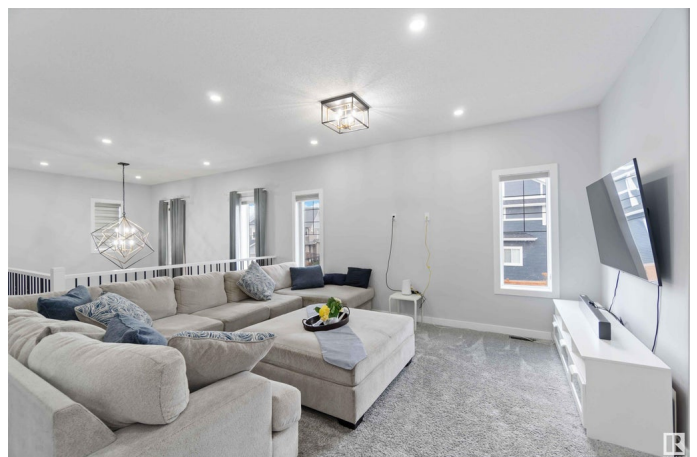
Keswick Area, Edmonton, AB

Welcome to this Stunning Approx. 2800 sq. ft. Corner-Lot CUSTOM BUILT Home in the PRESTIGIOUS community of KESWICK! This Spacious and Beautifully designed Home offers everything your family needs -and more! Boasting a huge chef-inspired kitchen with premium finishes, an abundance of cabinetry, and a massive island perfect for gatherings and entertaining. The SEPARATE ENTRANCE leads to a FULLY FINISHED BASEMENT featuring TWO Spacious Bedrooms and a SECOND KITCHEN, TWO FURNACE AND SECOND LAUNDRY ideal for extended family. Enjoy outdoor living at its finest with the oversized deck, perfect for summer BBQs and relaxation. Located just minutes from Scenic River Trails, Beautiful parks, and Top-Rated Schools, this home blends luxury, Comfort, and Convenience on a Generous corner lot. A Rare find in one of Edmontonâ€™s most prestigious neighborhoods, Experience the Keswick lifestyle today!

Built in 2020

Essential Information

MLS® #	E4444373
Price	\$829,900
Bedrooms	6



Bathrooms	4.00
Full Baths	4
Square Footage	2,799
Acres	0.00
Year Built	2020
Type	Single Family
Sub-Type	Detached Single Family
Style	2 Storey
Status	Active

Community Information

Address	5732 Keeping Crescent
Area	Edmonton
Subdivision	Keswick Area
City	Edmonton
County	ALBERTA
Province	AB
Postal Code	T6W 4K4

Amenities

Amenities	Air Conditioner, Ceiling 9 ft., Deck, No Animal Home, No Smoking Home, Vinyl Windows, HRV System, 9 ft. Basement Ceiling
Parking Spaces	4
Parking	Double Garage Attached

Interior

Interior Features	ensuite bathroom
Appliances	Air Conditioning-Central, Dishwasher-Built-In, Fan-Ceiling, Garage Control, Garage Opener, Hood Fan, Oven-Built-In, Oven-Microwave, Stove-Countertop Gas, Stove-Electric, Window Coverings, Dryer-Two, Refrigerators-Two, Washers-Two
Heating	Forced Air-1, Forced Air-2, Natural Gas
Fireplace	Yes
Fireplaces	Wall Mount
Stories	3
Has Suite	Yes
Has Basement	Yes
Basement	Full, Finished

Exterior

Exterior	Wood, Stone, Vinyl
Exterior Features	Airport Nearby, Corner Lot, Golf Nearby, Landscaped, No Back Lane, Playground Nearby, Schools, Shopping Nearby
Roof	Asphalt Shingles
Construction	Wood, Stone, Vinyl
Foundation	Concrete Perimeter

School Information

Elementary	Joan Carr Catholic
------------	--------------------

Additional Information

Date Listed	June 26th, 2025
Days on Market	11
Zoning	Zone 56
HOA Fees	350
HOA Fees Freq.	Annually

DATA IS DEEMED RELIABLE BUT IS NOT GUARANTEED ACCURATE BY THE REALTORS® ASSOCIATION OF EDMONTON. COPYRIGHT 2025 BY THE REALTORS® ASSOCIATION OF EDMONTON. ALL RIGHTS RESERVED. Trademarks are owned or controlled by the Canadian Real Estate Association (CREA) and identify real estate professionals who are members of CREA (REALTOR®, REALTORS®) and/or the quality of services they provide (MLS®, Multiple Listing Service®)

Listing information last updated on July 7th, 2025 at 6:02pm MDT