

\$425,000 - 526 Sunnydale Road, Morinville

MLS® #E4442322

\$425,000

4 Bedroom, 2.00 Bathroom, 1,266 sqft

Single Family on 0.00 Acres

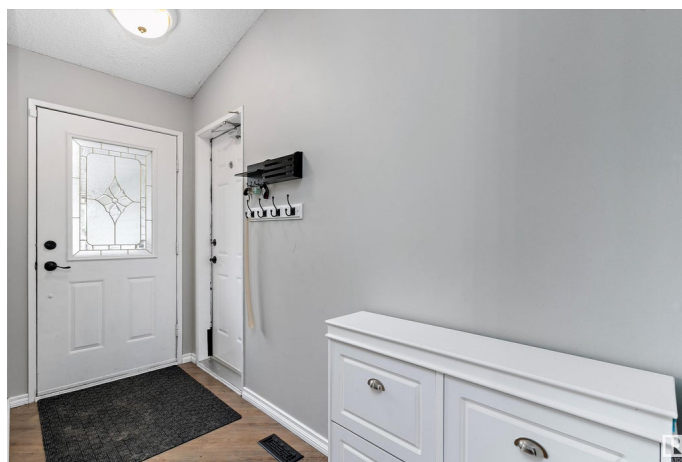
Morinville, Morinville, AB

Welcome to this well-maintained four level split in the desirable Sunshine Estates of Morinville! This bright and spacious home offers three bedrooms, two bathrooms, and updated finishes including vinyl plank flooring, and vaulted ceilings. The upgraded kitchen provides ample cupboard and counter space, while the dining area is perfect for family meals. With two living rooms, a den, exercise room, laundry, and storage in the basement, there's room for everyone. Enjoy the outdoors on the two-tiered deck overlooking a beautiful backyard. A perfect home for families or anyone who loves to entertain!

Built in 1990

Essential Information

| | |
|----------------|------------------------|
| MLS® # | E4442322 |
| Price | \$425,000 |
| Bedrooms | 4 |
| Bathrooms | 2.00 |
| Full Baths | 2 |
| Square Footage | 1,266 |
| Acres | 0.00 |
| Year Built | 1990 |
| Type | Single Family |
| Sub-Type | Detached Single Family |
| Style | 4 Level Split |



| | |
|--------|--------|
| Status | Active |
|--------|--------|

Community Information

| | |
|-------------|--------------------|
| Address | 526 Sunnydale Road |
| Area | Morinville |
| Subdivision | Morinville |
| City | Morinville |
| County | ALBERTA |
| Province | AB |
| Postal Code | T8R 1B8 |

Amenities

| | |
|-----------|------------------------|
| Amenities | Deck, Vinyl Windows |
| Parking | Double Garage Attached |

Interior

| | |
|-------------------|---|
| Interior Features | ensuite bathroom |
| Appliances | Dishwasher-Built-In, Dryer, Garage Control, Garage Opener, Microwave Hood Fan, Storage Shed, Stove-Electric, Washer, Window Coverings |
| Heating | Forced Air-1, Natural Gas |
| Stories | 3 |
| Has Basement | Yes |
| Basement | Full, Partially Finished |

Exterior

| | |
|-------------------|---|
| Exterior | Wood, Vinyl |
| Exterior Features | Fenced, Flat Site, Golf Nearby, Landscaped, Level Land, No Back Lane, Playground Nearby, Schools, Shopping Nearby |
| Roof | Asphalt Shingles |
| Construction | Wood, Vinyl |
| Foundation | Concrete Perimeter |

School Information

| | |
|------------|---------------------|
| Elementary | MPS, Notre Dame |
| Middle | Four Winds, Primeau |
| High | SCHS, MCHS |

Additional Information

| | |
|----------------|-----------------|
| Date Listed | June 13th, 2025 |
| Days on Market | 3 |

Zoning

Zone 61

DATA IS DEEMED RELIABLE BUT IS NOT GUARANTEED ACCURATE BY THE REALTORS® ASSOCIATION OF EDMONTON. COPYRIGHT 2025 BY THE REALTORS® ASSOCIATION OF EDMONTON. ALL RIGHTS RESERVED. Trademarks are owned or controlled by the Canadian Real Estate Association (CREA) and identify real estate professionals who are members of CREA (REALTOR®, REALTORS®) and/or the quality of services they provide (MLS®, Multiple Listing Service®)

Listing information last updated on June 16th, 2025 at 12:32pm MDT