

\$184,900 - 222 2035 Grantham Court, Edmonton

MLS® #E4442147

\$184,900

1 Bedroom, 1.00 Bathroom, 656 sqft

Condo / Townhouse on 0.00 Acres

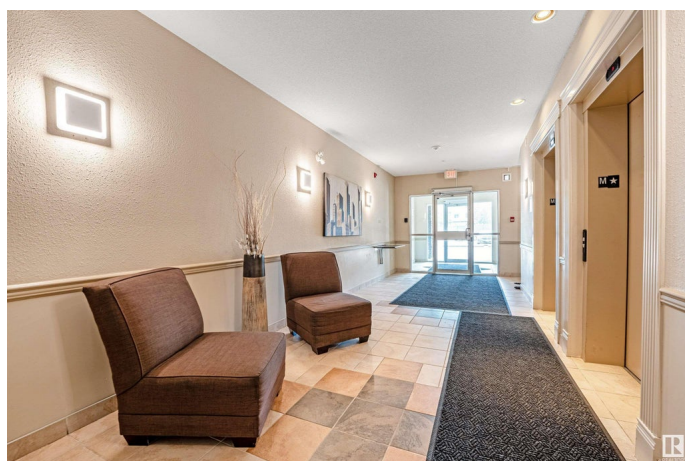
Glastonbury, Edmonton, AB

Stylish and well-maintained 1-bedroom condo on the 2nd floor, steps from the elevator and gym. Features include high quality vinyl-like laminate flooring, fireplace, stainless steel appliances, built-in pantry, and in-suite laundry. The open layout leads to a large, private balcony with tree coverage for added privacy. Underground parking stall comes with a storage room right beside it, plus a convenient car wash bayâ€”perfect for winter or year-round use. Enjoy great amenities including an entertainment room with kitchen, washroom, pool table, and TV, plus a guest suite that can be reserved by owners for visiting family or friends at a lower cost than hotels. Located close to shops, cafÃ©s, Costco, schools, green space, and with quick access to the Henday. A perfect option for first-time buyers, downsizers, or investors looking for a move-in-ready home in a prime location.

Built in 2008

Essential Information

MLS® #	E4442147
Price	\$184,900
Bedrooms	1
Bathrooms	1.00
Full Baths	1



Square Footage	656
Acres	0.00
Year Built	2008
Type	Condo / Townhouse
Sub-Type	Lowrise Apartment
Style	Single Level Apartment
Status	Active

Community Information

Address	222 2035 Grantham Court
Area	Edmonton
Subdivision	Glastonbury
City	Edmonton
County	ALBERTA
Province	AB
Postal Code	T5T 3X6

Amenities

Amenities	Car Wash, Exercise Room, Guest Suite, Party Room, Recreation Room/Centre, Secured Parking, Social Rooms, Storage-Locker Room
Parking	Heated, Underground

Interior

Interior Features	ensuite bathroom
Appliances	Dishwasher-Built-In, Dryer, Microwave Hood Fan, Refrigerator, Stove-Electric, Washer
Heating	In Floor Heat System, Natural Gas
Fireplace	Yes
Fireplaces	Mantel
# of Stories	4
Stories	1
Has Basement	Yes
Basement	None, No Basement

Exterior

Exterior	Wood, Stone, Stucco
Exterior Features	Playground Nearby, Public Transportation, Schools, Shopping Nearby
Roof	Tar & Gravel
Construction	Wood, Stone, Stucco

Foundation Concrete Perimeter

Additional Information

Date Listed June 12th, 2025
Days on Market 52
Zoning Zone 58
Condo Fee \$405

DATA IS DEEMED RELIABLE BUT IS NOT GUARANTEED ACCURATE BY THE REALTORS® ASSOCIATION OF EDMONTON. COPYRIGHT 2025 BY THE REALTORS® ASSOCIATION OF EDMONTON. ALL RIGHTS RESERVED.Trademarks are owned or controlled by the Canadian Real Estate Association (CREA) and identify real estate professionals who are members of CREA (REALTOR®, REALTORS®) and/or the quality of services they provide (MLS®, Multiple Listing Service®)
Listing information last updated on August 3rd, 2025 at 12:17am MDT