

\$675,000 - 5533 Edworthy Way, Edmonton

MLS® #E4438571

\$675,000

4 Bedroom, 2.50 Bathroom, 2,621 sqft

Single Family on 0.00 Acres

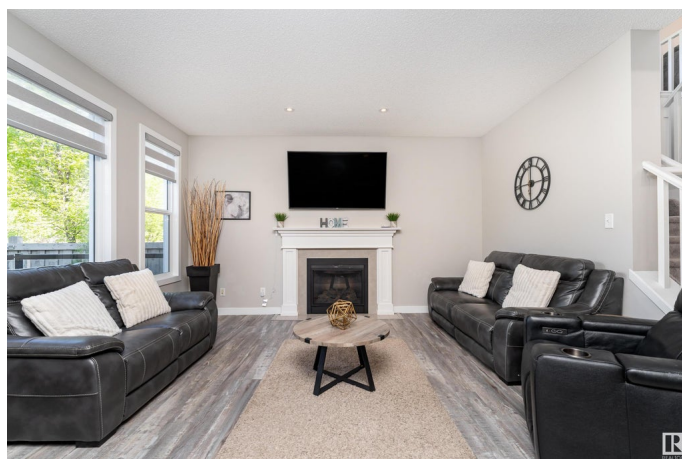
Edgemont (Edmonton), Edmonton, AB

Welcome to this stunning 2-storey home in the quiet community of Woodhaven. Offering over 2,620 sq. ft. of beautifully designed living space, this 4-bedroom home features an open-concept main floor with a spacious kitchen, dining and living area. The gourmet kitchen boasts a large island with eating bar, walk-through pantry and stainless steel appliances. Enjoy the cozy gas fireplace and abundant south-facing windows. A main floor den adds flexibility for work or study. Upstairs, a central bonus room anchors the upper level, along with a luxurious primary suite featuring a soaker tub, dual sinks, separate shower and a large walk-in closet. Three additional bedrooms, a Jack & Jill bath and upper-floor laundry complete the second level. Located on a southwest-facing corner lot, with an unfinished basement ready for your vision—this home truly has it all!

Built in 2015

Essential Information

MLS® #	E4438571
Price	\$675,000
Bedrooms	4
Bathrooms	2.50
Full Baths	2
Half Baths	1



Square Footage	2,621
Acres	0.00
Year Built	2015
Type	Single Family
Sub-Type	Detached Single Family
Style	2 Storey
Status	Active

Community Information

Address	5533 Edworthy Way
Area	Edmonton
Subdivision	Edgemont (Edmonton)
City	Edmonton
County	ALBERTA
Province	AB
Postal Code	T6M 0N8

Amenities

Amenities	Air Conditioner, Carbon Monoxide Detectors, Deck, Detectors Smoke, Gazebo, Hot Water Natural Gas, No Smoking Home, HRV System
Parking	Double Garage Attached

Interior

Interior Features	ensuite bathroom
Appliances	Air Conditioning-Central, Dishwasher-Built-In, Dryer, Garage Control, Garage Opener, Microwave Hood Fan, Refrigerator, Storage Shed, Stove-Electric, Washer, Window Coverings
Heating	Forced Air-1, Natural Gas
Fireplace	Yes
Fireplaces	Tile Surround
Stories	2
Has Basement	Yes
Basement	Full, Unfinished

Exterior

Exterior	Wood, Stone, Vinyl
Exterior Features	Corner Lot, Landscaped, No Back Lane, Playground Nearby, Schools, Shopping Nearby
Roof	Asphalt Shingles

Construction	Wood, Stone, Vinyl
Foundation	Concrete Perimeter

School Information

Elementary	Michael A. Kostek School
Middle	S. Bruce Smith School
High	Jasper Place School

Additional Information

Date Listed	May 26th, 2025
Days on Market	43
Zoning	Zone 57

DATA IS DEEMED RELIABLE BUT IS NOT GUARANTEED ACCURATE BY THE REALTORS® ASSOCIATION OF EDMONTON. COPYRIGHT 2025 BY THE REALTORS® ASSOCIATION OF EDMONTON. ALL RIGHTS RESERVED.Trademarks are owned or controlled by the Canadian Real Estate Association (CREA) and identify real estate professionals who are members of CREA (REALTOR®, REALTORS®) and/or the quality of services they provide (MLS®, Multiple Listing Service®)

Listing information last updated on July 8th, 2025 at 3:47pm MDT