

Courtesy Of Tyler J Ellis Of Real Broker

\$214,900 - 314 6070 Schonsee Way, Edmonton

MLS® #E4438420

\$214,900

2 Bedroom, 2.00 Bathroom, 755 sqft

Condo / Townhouse on 0.00 Acres

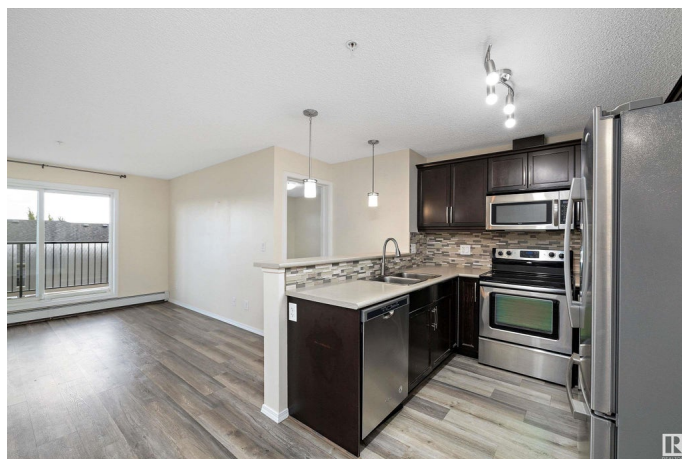
Schonsee, Edmonton, AB

Look no further! This immaculate, bright, and open-concept 2 bedroom, 2 bathroom condo offers 754.51 sq ft of thoughtfully designed living space. The stylish U-shaped kitchen features a raised eating bar, stainless steel appliances, under-cabinet lighting, new backsplash, and plenty of cabinetry. The primary bedroom includes a walk-through closet and 3-pc ensuite, while the second bedroom and full bath are perfectly positioned on the opposite side—ideal for roommates or a home office setup. Enjoy gleaming upgraded hardwood-style flooring and the convenience of in-suite laundry. Step out onto your balcony with serene pond views and a gas BBQ hookup. This well-maintained building offers a fitness center, party room, and heated underground parking. Located near schools, shopping, and public transit. Reasonable condo fees complete this fantastic home!

Built in 2011

Essential Information

MLS® #	E4438420
Price	\$214,900
Bedrooms	2
Bathrooms	2.00
Full Baths	2
Square Footage	755



Acres	0.00
Year Built	2011
Type	Condo / Townhouse
Sub-Type	Lowrise Apartment
Style	Multi Level Apartment
Status	Active

Community Information

Address	314 6070 Schonsee Way
Area	Edmonton
Subdivision	Schonsee
City	Edmonton
County	ALBERTA
Province	AB
Postal Code	T5Z 0G8

Amenities

Amenities	Closet Organizers, Exercise Room, Parking-Visitor, Secured Parking, Security Door
Parking	Heated, Underground

Interior

Interior Features	ensuite bathroom
Appliances	Dishwasher-Built-In, Dryer, Garage Control, Microwave Hood Fan, Refrigerator, Stove-Electric, Washer
Heating	Baseboard, Hot Water, Natural Gas
# of Stories	4
Stories	4
Has Basement	Yes
Basement	None, No Basement

Exterior

Exterior	Wood, Brick, Vinyl
Exterior Features	Low Maintenance Landscape, Park/Reserve, Playground Nearby, Public Transportation, Schools, Shopping Nearby, View Lake
Roof	Asphalt Shingles
Construction	Wood, Brick, Vinyl
Foundation	Concrete Perimeter

Additional Information

Date Listed	May 24th, 2025
Days on Market	70
Zoning	Zone 28
Condo Fee	\$341

DATA IS DEEMED RELIABLE BUT IS NOT GUARANTEED ACCURATE BY THE REALTORS® ASSOCIATION OF EDMONTON. COPYRIGHT 2025 BY THE REALTORS® ASSOCIATION OF EDMONTON. ALL RIGHTS RESERVED. Trademarks are owned or controlled by the Canadian Real Estate Association (CREA) and identify real estate professionals who are members of CREA (REALTOR®, REALTORS®) and/or the quality of services they provide (MLS®, Multiple Listing Service®)

Listing information last updated on August 2nd, 2025 at 6:47pm MDT