

\$165,000 - 216 7835 159 Street, Edmonton

MLS® #E4436170

\$165,000

3 Bedroom, 1.50 Bathroom, 1,205 sqft

Condo / Townhouse on 0.00 Acres

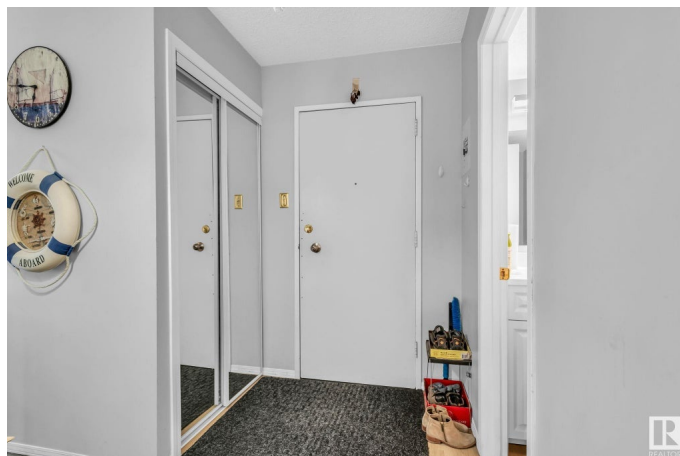
Patricia Heights, Edmonton, AB

Attention Investors & Home Buyers! Welcome to Country Club Estates in the sought-after community of Patricia Heights. This bright and spacious 2-storey condo features 3 generous bedrooms, 1.5 baths, and a sunny private terrace—perfect for relaxing or entertaining. Ideally located near scenic river valley trails, parks, and convenient transit to the U of A, Downtown, Misericordia Hospital, and West Edmonton Mall. The well-managed complex has undergone significant upgrades, including new windows, patio doors, siding, and roof—offering peace of mind and long-term value.

Built in 1971

Essential Information

MLS® #	E4436170
Price	\$165,000
Bedrooms	3
Bathrooms	1.50
Full Baths	1
Half Baths	1
Square Footage	1,205
Acres	0.00
Year Built	1971
Type	Condo / Townhouse
Sub-Type	Lowrise Apartment



Style	2 Storey
Status	Active

Community Information

Address	216 7835 159 Street
Area	Edmonton
Subdivision	Patricia Heights
City	Edmonton
County	ALBERTA
Province	AB
Postal Code	T5R 2E1

Amenities

Amenities	Detectors Smoke, No Animal Home, No Smoking Home, Parking-Visitor, Patio, Vinyl Windows
Parking	Stall

Interior

Appliances	Dishwasher-Built-In, Hood Fan, Refrigerator, Stove-Electric
Heating	Baseboard, Natural Gas
# of Stories	2
Stories	2
Has Basement	Yes
Basement	None, No Basement

Exterior

Exterior	Wood, Brick, Vinyl
Exterior Features	Fenced, Public Transportation, Schools, Shopping Nearby
Roof	Tar & Gravel
Construction	Wood, Brick, Vinyl
Foundation	Concrete Perimeter

Additional Information

Date Listed	May 13th, 2025
Days on Market	1
Zoning	Zone 22
Condo Fee	\$651

DATA IS DEEMED RELIABLE BUT IS NOT GUARANTEED ACCURATE BY THE REALTORS® ASSOCIATION OF EDMONTON. COPYRIGHT 2025 BY THE REALTORS® ASSOCIATION OF EDMONTON. ALL RIGHTS RESERVED. Trademarks are owned or controlled by the Canadian Real Estate Association (CREA) and identify real

estate professionals who are members of CREA (REALTOR®®, REALTORS®®) and/or the quality of services they provide (MLS®®, Multiple Listing Service®®)

Listing information last updated on May 14th, 2025 at 11:17am MDT