

\$259,900 - 21 10160 119 Street, Edmonton

MLS® #E4435646

\$259,900

2 Bedroom, 2.00 Bathroom, 1,200 sqft

Condo / Townhouse on 0.00 Acres

Wāhkwahtāwin, Edmonton, AB

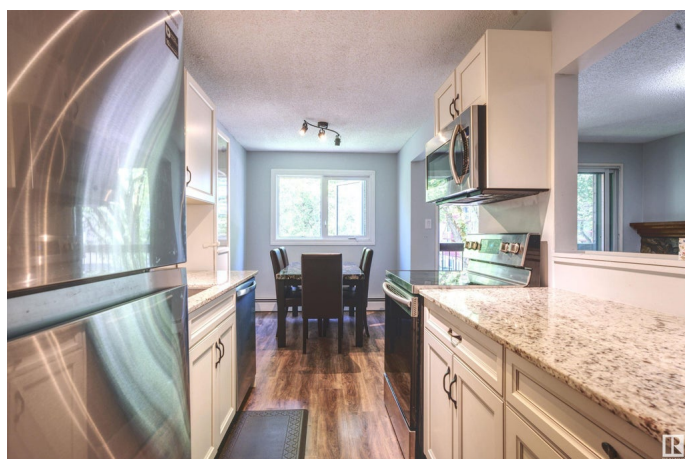
Massive 1200 sqft apartment in the highly sought after area of Wihkwentowin (formerly Oliver). Two massive bedrooms, in-suite laundry, new appliances and updated kitchen. Beautiful feature wood burning fireplace in the large living room with views overlooking the city. One assigned parking space and the owners are currently renting a second for \$80/month. Storage locker plus large storage closet in master bedroom. Loads of space, great location, won't last! Furnishings are also negotiable!

Built in 1980

Essential Information

MLS® #	E4435646
Price	\$259,900
Bedrooms	2
Bathrooms	2.00
Full Baths	2
Square Footage	1,200
Acres	0.00
Year Built	1980
Type	Condo / Townhouse
Sub-Type	Lowrise Apartment
Style	Single Level Apartment
Status	Active

Community Information



Address	21 10160 119 Street
Area	Edmonton
Subdivision	WÃ©hkwÃ¢ntÃ´win
City	Edmonton
County	ALBERTA
Province	AB
Postal Code	T5K 1Y9

Amenities

Amenities	On Street Parking, Deck, No Smoking Home, Storage Cage
Parking Spaces	1
Parking	Underground

Interior

Interior Features	ensuite bathroom
Appliances	Dishwasher-Built-In, Dryer, Refrigerator, Stove-Electric, Washer
Heating	Hot Water, Natural Gas
Fireplace	Yes
Fireplaces	Mantel, Stone Facing
# of Stories	4
Stories	1
Has Basement	Yes
Basement	None, No Basement

Exterior

Exterior	Wood, Stone
Exterior Features	Playground Nearby, Public Transportation, Schools, Shopping Nearby, View City
Roof	Tar & Gravel
Construction	Wood, Stone
Foundation	Concrete Perimeter

Additional Information

Date Listed	May 9th, 2025
Days on Market	108
Zoning	Zone 12
Condo Fee	\$743

DATA IS DEEMED RELIABLE BUT IS NOT GUARANTEED ACCURATE BY THE REALTORS® ASSOCIATION OF EDMONTON. COPYRIGHT 2025 BY THE REALTORS® ASSOCIATION OF EDMONTON. ALL RIGHTS

RESERVED.Trademarks are owned or controlled by the Canadian Real Estate Association (CREA) and identify real estate professionals who are members of CREA (REALTOR®, REALTORS®) and/or the quality of services they provide (MLS®, Multiple Listing Service®)

Listing information last updated on August 25th, 2025 at 1:47pm MDT