

Courtesy Of David C St. Jean Of Exp Realty

\$619,900 - 353 Galbraith Close, Edmonton

MLS® #E4435467

\$619,900

4 Bedroom, 3.50 Bathroom, 2,056 sqft
Single Family on 0.00 Acres

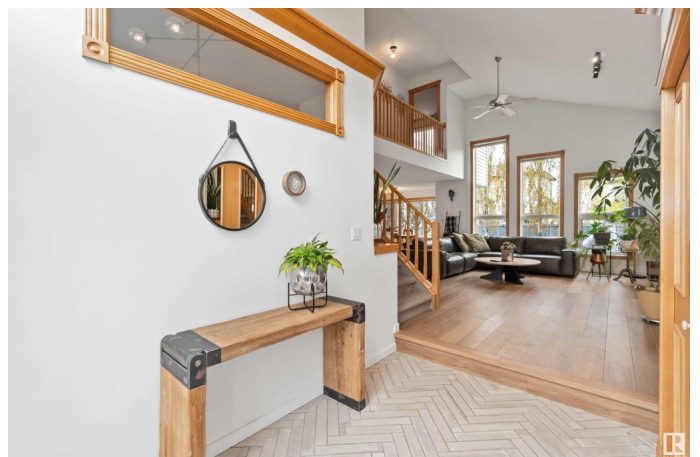
Glastonbury, Edmonton, AB

Welcome to 353 Galbraith Close, a custom-built, newly renovated home nestled in the desirable Glastonbury community. This spacious residence offers 4 beds plus a den, 4 baths, and a fully finished basement, offering over 2000sqft of living space. The open-concept main floor features vaulted ceilings, large windows, and a stunning gas fireplace. The kitchen is equipped with white cabinets, granite countertops, modern appliances, & a large walk-through pantry. Upstairs, the primary suite offers a cozy gas fireplace, walk-in closet, and a luxurious 5-piece spa ensuite. The expansive basement includes a theatre room with projector and screen, a large recreation area suitable for a home gym or playroom, and a 4th bedroom with a 3-piece bathroom. Enjoy outdoor living in the large fenced backyard with a beautiful stone patio. Located near walking trails, parks, schools, shopping, & with easy access to Anthony Henday and Whitemud Drive, this home offers exceptional value and lifestyle. All this home needs is YOU!

Built in 2001

Essential Information

MLS® #	E4435467
Price	\$619,900



Bedrooms	4
Bathrooms	3.50
Full Baths	3
Half Baths	1
Square Footage	2,056
Acres	0.00
Year Built	2001
Type	Single Family
Sub-Type	Detached Single Family
Style	2 Storey
Status	Active

Community Information

Address	353 Galbraith Close
Area	Edmonton
Subdivision	Glastonbury
City	Edmonton
County	ALBERTA
Province	AB
Postal Code	T5T 6K3

Amenities

Amenities	Closet Organizers, Detectors Smoke, Front Porch, Patio, Vaulted Ceiling
Parking	Double Garage Attached

Interior

Interior Features	ensuite bathroom
Appliances	Dishwasher-Built-In, Dryer, Fan-Ceiling, Garage Control, Garage Opener, Hood Fan, Refrigerator, Stove-Electric, Washer, Window Coverings, Projector
Heating	Forced Air-1, Natural Gas
Fireplace	Yes
Fireplaces	Mantel
Stories	3
Has Basement	Yes
Basement	Full, Finished

Exterior

Exterior	Wood, Stone, Vinyl
----------	--------------------

Exterior Features	Fenced, Golf Nearby, Landscaped, Level Land, No Back Lane, Picnic Area, Playground Nearby, Public Transportation, Schools, Shopping Nearby
Roof	Asphalt Shingles
Construction	Wood, Stone, Vinyl
Foundation	Concrete Perimeter

School Information

Elementary	Kim Hung School
Middle	Kim Hung School
High	Jasper Place School

Additional Information

Date Listed	May 9th, 2025
Days on Market	4
Zoning	Zone 58
HOA Fees	183.75
HOA Fees Freq.	Annually

DATA IS DEEMED RELIABLE BUT IS NOT GUARANTEED ACCURATE BY THE REALTORS® ASSOCIATION OF EDMONTON. COPYRIGHT 2025 BY THE REALTORS® ASSOCIATION OF EDMONTON. ALL RIGHTS RESERVED. Trademarks are owned or controlled by the Canadian Real Estate Association (CREA) and identify real estate professionals who are members of CREA (REALTOR®, REALTORS®) and/or the quality of services they provide (MLS®, Multiple Listing Service®)

Listing information last updated on May 14th, 2025 at 12:02am MDT