

## \$409,900 - 1035 Moyer Drive, Sherwood Park

MLS® #E4435416

**\$409,900**

4 Bedroom, 2.00 Bathroom, 1,157 sqft

Single Family on 0.00 Acres

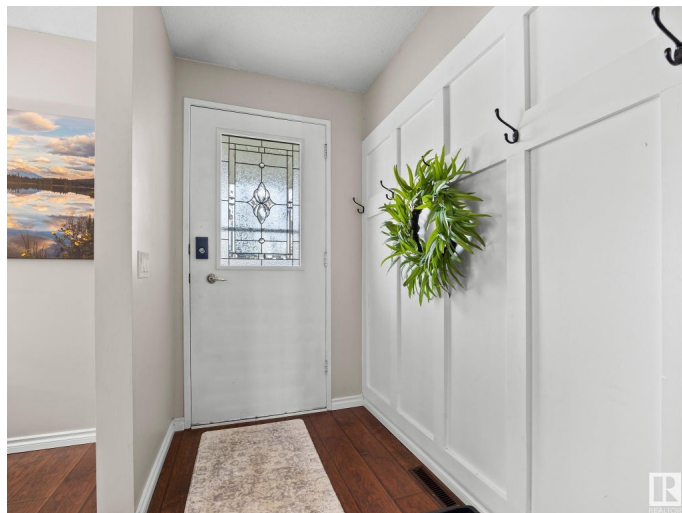
Westboro, Sherwood Park, AB

Welcome to this perfect family home in Westboro! This is a turn-key, beautifully maintained, fully finished 4 bedroom, 2 full bath bungalow. Enjoy updated stainless steel appliances, carpets in the basement and paint. Upstairs you will find 3 large bedrooms, and a 4 piece bath. In the fully finished basement you have a large rec room, a 3 piece bathroom and a massive additional bedroom. Some bonuses include central air conditioning, a large fully fenced back yard, complete with 2 sheds and a deck, a laundry shoot and more! Nestled in a friendly neighbourhood you have easy access to schools, parks and amenities!

Built in 1970

### Essential Information

MLS® #	E4435416
Price	\$409,900
Bedrooms	4
Bathrooms	2.00
Full Baths	2
Square Footage	1,157
Acres	0.00
Year Built	1970
Type	Single Family
Sub-Type	Detached Single Family
Style	Bungalow



Status	Active
--------	--------

## Community Information

Address	1035 Moyer Drive
Area	Sherwood Park
Subdivision	Westboro
City	Sherwood Park
County	ALBERTA
Province	AB
Postal Code	T8A 1E7

## Amenities

Amenities	Air Conditioner, Deck, No Smoking Home, Parking-Extra
Parking	Front Drive Access

## Interior

Appliances	Air Conditioning-Central, Dishwasher-Built-In, Dryer, Microwave Hood Fan, Refrigerator, Storage Shed, Stove-Electric, Washer, Window Coverings
Heating	Forced Air-1, Natural Gas
Stories	2
Has Basement	Yes
Basement	Full, Finished

## Exterior

Exterior	Wood, Vinyl
Exterior Features	Fenced, Fruit Trees/Shrubs, Landscaped, No Back Lane, No Through Road
Roof	Asphalt Shingles
Construction	Wood, Vinyl
Foundation	Concrete Perimeter

## Additional Information

Date Listed	May 9th, 2025
Days on Market	5
Zoning	Zone 25

DATA IS DEEMED RELIABLE BUT IS NOT GUARANTEED ACCURATE BY THE REALTORS® ASSOCIATION OF EDMONTON. COPYRIGHT 2025 BY THE REALTORS® ASSOCIATION OF EDMONTON. ALL RIGHTS RESERVED. Trademarks are owned or controlled by the Canadian Real Estate Association (CREA) and identify real estate professionals who are members of CREA (REALTOR®, REALTORS®) and/or the quality of services they provide (MLS®, Multiple Listing Service®).

