

\$329,900 - 7 90 Liberton Drive, St. Albert

MLS® #E4434825

\$329,900

3 Bedroom, 2.50 Bathroom, 1,559 sqft
Condo / Townhouse on 0.00 Acres

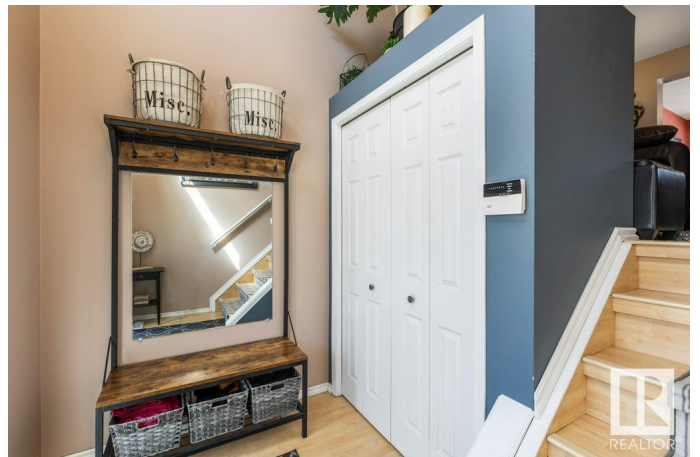
Lacombe Park, St. Albert, AB

Welcome to this beautifully maintained and fully move-in ready townhome offering over 1500sqft and featuring 3 spacious bedrooms and 2.5 bathrooms. The heart of the home is a newly renovated kitchen offering plenty of storage, a central island, sleek modern backsplash, and stainless steel appliances—perfect for everyday living and entertaining. Just off the kitchen is a renovated 2pce bathroom. Enjoy the versatile layout with a cozy front living room, a generous formal dining area, and a large, inviting family room complete with a gas fireplace. There are three well-sized bedrooms, including a primary suite that boasts a walk-in closet and a luxurious 4-piece ensuite with a separate jetted tub. The main bathroom is a standout with a relaxing steam shower. Step outside to a private, maintenance-free back deck—ideal for enjoying summer evenings. A double attached garage completes the package on this fantastic property!

Built in 1991

Essential Information

MLS® #	E4434825
Price	\$329,900
Bedrooms	3
Bathrooms	2.50



Full Baths	2
Half Baths	1
Square Footage	1,559
Acres	0.00
Year Built	1991
Type	Condo / Townhouse
Sub-Type	Townhouse
Style	5 Level Split
Status	Active

Community Information

Address	7 90 Liberton Drive
Area	St. Albert
Subdivision	Lacombe Park
City	St. Albert
County	ALBERTA
Province	AB
Postal Code	T8N 5Z6

Amenities

Amenities	Air Conditioner, Deck
Parking	Double Garage Attached

Interior

Interior Features	ensuite bathroom
Appliances	Air Conditioning-Central, Dishwasher-Built-In, Dryer, Garage Control, Garage Opener, Microwave Hood Fan, Refrigerator, Stove-Electric, Washer
Heating	Forced Air-1, Natural Gas
Fireplace	Yes
Fireplaces	Mantel, Tile Surround
Stories	4
Has Basement	Yes
Basement	Full, Unfinished

Exterior

Exterior	Wood, Brick, Stucco
Exterior Features	Fenced, Landscaped, Private Setting, Public Transportation, Schools, Shopping Nearby, See Remarks

Roof	Asphalt Shingles
Construction	Wood, Brick, Stucco
Foundation	Concrete Perimeter

Additional Information

Date Listed	May 6th, 2025
Days on Market	9
Zoning	Zone 24
Condo Fee	\$469

DATA IS DEEMED RELIABLE BUT IS NOT GUARANTEED ACCURATE BY THE REALTORS® ASSOCIATION OF EDMONTON. COPYRIGHT 2025 BY THE REALTORS® ASSOCIATION OF EDMONTON. ALL RIGHTS RESERVED.Trademarks are owned or controlled by the Canadian Real Estate Association (CREA) and identify real estate professionals who are members of CREA (REALTOR®, REALTORS®) and/or the quality of services they provide (MLS®, Multiple Listing Service®)

Listing information last updated on May 14th, 2025 at 9:47pm MDT