

\$239,900 - 314 905 Blacklock Way, Edmonton

MLS® #E4434073

\$239,900

2 Bedroom, 2.00 Bathroom, 1,033 sqft

Condo / Townhouse on 0.00 Acres

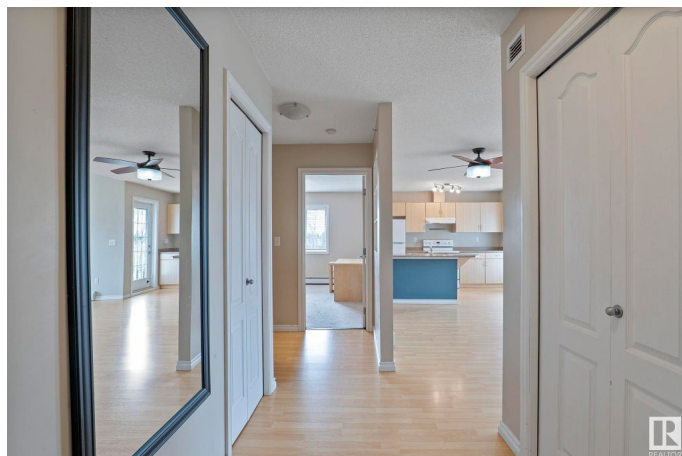
Blackburne, Edmonton, AB

Top Floor Corner Unit with Ravine Views in the highly sought after Blackburne Park Building! This well maintained 1000sq/ft unit features 2 bedrooms, 2 full baths & 2 underground parking stalls. The Primary Bedroom overlooks the trees and has a large walkthrough closet and full en-suite. Great open concept layout with spacious living room is highlighted by a gas fireplace, vaulted ceilings and bright large windows. This unit boasts plenty of storage and in-suite laundry. Enjoy your balcony (incl gas hookup) overlooking the ravine and wildlife. Underground parking stalls are titled plus there is a large storage cage included. Blackburne is a prime location, close to parks, ravine trails, shopping, amenities and the Anthony Henday and Calgary Trail. This Rare is a true Must See!

Built in 2003

Essential Information

MLS® #	E4434073
Price	\$239,900
Bedrooms	2
Bathrooms	2.00
Full Baths	2
Square Footage	1,033
Acres	0.00
Year Built	2003



Type	Condo / Townhouse
Sub-Type	Lowrise Apartment
Style	Single Level Apartment
Status	Active

Community Information

Address	314 905 Blacklock Way
Area	Edmonton
Subdivision	Blackburne
City	Edmonton
County	ALBERTA
Province	AB
Postal Code	T6W 1M7

Amenities

Amenities	No Smoking Home, Parking-Visitor, Patio, Secured Parking, Security Door, Storage-In-Suite, Storage Cage
Parking Spaces	2
Parking	Underground

Interior

Interior Features	ensuite bathroom
Appliances	Dishwasher-Built-In, Dryer, Hood Fan, Refrigerator, Stove-Electric, Washer, Window Coverings
Heating	Baseboard, Water
Fireplace	Yes
Fireplaces	Corner
# of Stories	3
Stories	1
Has Basement	Yes
Basement	None, No Basement

Exterior

Exterior	Wood, Vinyl
Exterior Features	Backs Onto Park/Trees, Landscaped, Private Setting, Schools, Shopping Nearby
Roof	Asphalt Shingles
Construction	Wood, Vinyl
Foundation	Concrete Perimeter

Additional Information

Date Listed	May 2nd, 2025
Days on Market	11
Zoning	Zone 55
Condo Fee	\$551

DATA IS DEEMED RELIABLE BUT IS NOT GUARANTEED ACCURATE BY THE REALTORS® ASSOCIATION OF EDMONTON. COPYRIGHT 2025 BY THE REALTORS® ASSOCIATION OF EDMONTON. ALL RIGHTS RESERVED.Trademarks are owned or controlled by the Canadian Real Estate Association (CREA) and identify real estate professionals who are members of CREA (REALTOR®, REALTORS®) and/or the quality of services they provide (MLS®, Multiple Listing Service®)

Listing information last updated on May 14th, 2025 at 12:17am MDT