

\$725,000 - 8532 16a Avenue, Edmonton

MLS® #E4434036

\$725,000

4 Bedroom, 3.50 Bathroom, 2,121 sqft

Single Family on 0.00 Acres

Summerside, Edmonton, AB

Immaculate WALKOUT in Summerside! Experience serene living in this beautifully maintained, original-owner 2-storey home. Filled with natural light from large windows and skylights, the bright and open layout features a stunning white chef's kitchen with granite island, stainless steel appliances, and a custom walk-through pantry. Newly installed flooring adds a modern, updated touch throughout. The kitchen, dining, and living areas overlook a spacious pie-shaped lot and beautifully landscaped greenspace. Upstairs, enjoy a vaulted bonus room, two generous bedrooms, and a spacious primary suite with walk-in closet and luxurious 5-piece ensuite. The finished walkout basement offers a large rec room, additional bedroom, 4-piece bath, and a screened-in outdoor retreat—perfect for relaxing or entertaining. Located just 250m from the private beach and under 300m from a K-9 school, this home combines comfort, style, and convenience in one exceptional package.

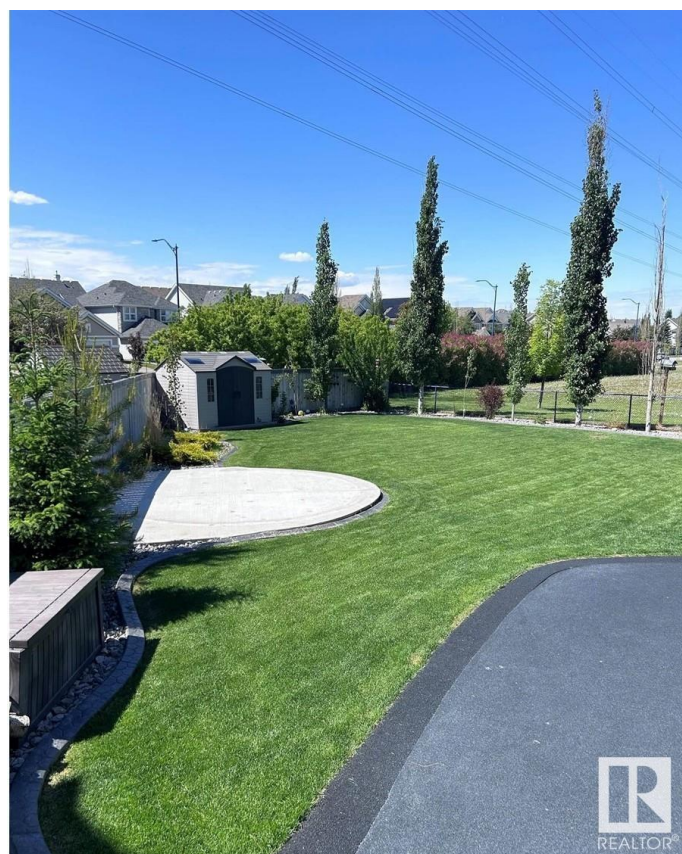
Built in 2008

Essential Information

MLS® # E4434036

Price \$725,000

Bedrooms 4



| | |
|----------------|------------------------|
| Bathrooms | 3.50 |
| Full Baths | 3 |
| Half Baths | 1 |
| Square Footage | 2,121 |
| Acres | 0.00 |
| Year Built | 2008 |
| Type | Single Family |
| Sub-Type | Detached Single Family |
| Style | 2 Storey |
| Status | Active |

Community Information

| | |
|-------------|-----------------|
| Address | 8532 16a Avenue |
| Area | Edmonton |
| Subdivision | Summerside |
| City | Edmonton |
| County | ALBERTA |
| Province | AB |
| Postal Code | T6X 0H9 |

Amenities

| | |
|-----------|--|
| Amenities | Air Conditioner, Carbon Monoxide Detectors, Ceiling 10 ft., Deck, Detectors Smoke, Hot Water Natural Gas, Lake Privileges, No Smoking Home, Patio, Smart/Program. Thermostat, Skylight, Sunroom, Vaulted Ceiling, Walkout Basement |
| Parking | Double Garage Attached |

Interior

| | |
|-------------------|--|
| Interior Features | ensuite bathroom |
| Appliances | Air Conditioning-Central, Dishwasher-Built-In, Dryer, Garburator, Microwave Hood Fan, Oven-Microwave, Refrigerator, Storage Shed, Stove-Electric, Vacuum Systems, Washer, Window Coverings |
| Heating | Forced Air-1, Natural Gas |
| Fireplace | Yes |
| Fireplaces | Tile Surround |
| Stories | 3 |
| Has Basement | Yes |
| Basement | Full, Finished |

Exterior

| | |
|-------------------|--|
| Exterior | Wood, Vinyl |
| Exterior Features | Airport Nearby, Backs Onto Fenced, Lake Access Private Playground Nearby, Private Shopping Nearby, View Down |
| Roof | Asphalt Shingles |
| Construction | Wood, Vinyl |
| Foundation | Concrete Perimeter |

Additional Information

| | |
|----------------|---------------|
| Date Listed | May 2nd, 2025 |
| Days on Market | 12 |
| Zoning | Zone 53 |
| HOA Fees | 443.71 |
| HOA Fees Freq. | Annually |



DATA IS DEEMED RELIABLE BUT IS NOT GUARANTEED ACCURATE BY THE REALTORS® ASSOCIATION OF EDMONTON. COPYRIGHT 2025 BY THE REALTORS® ASSOCIATION OF EDMONTON. ALL RIGHTS RESERVED.Trademarks are owned or controlled by the Canadian Real Estate Association (CREA) and identify real estate professionals who are members of CREA (REALTOR®, REALTORS®) and/or the quality of services they provide (MLS®, Multiple Listing Service®)

Listing information last updated on May 14th, 2025 at 10:32am MDT