

\$375,000 - 10325 81 Street, Edmonton

MLS® #E4433560

\$375,000

3 Bedroom, 2.50 Bathroom, 1,056 sqft

Single Family on 0.00 Acres

Forest Heights (Edmonton), Edmonton, AB

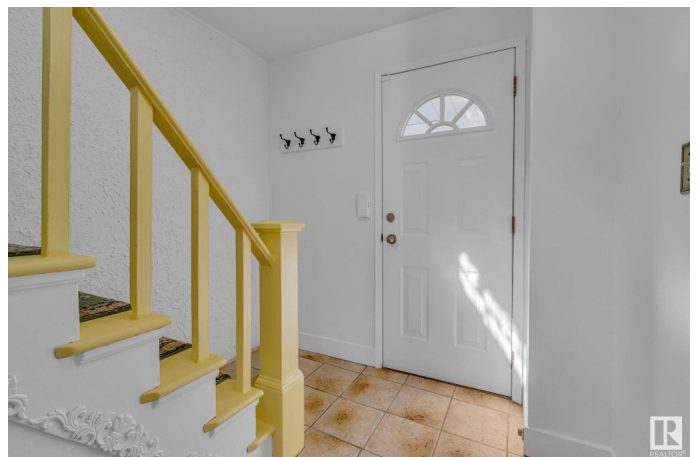
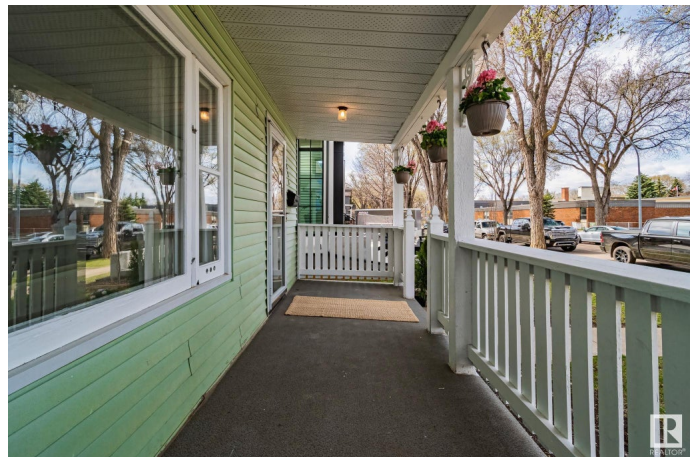
Meticulously maintained 2-storey Original Farmhouse in Forest Heights! Situated on a 39' wide lot overlooking a green space, this charming home offers a rare combination of vintage charm and thoughtful updates. It's the perfect opportunity to live comfortably now while planning for future development. The main floor features a bright living room with a large picture window, a dining area, a functional kitchen, and a back deck with access to the yard. Upstairs, you'll find 3 bedrooms, an updated 4-piece bathroom, clever built-in storage solutions, original hardwood floors, classic woodwork details, and a 2nd-storey deck with treetop views. The basement offers potential for hobby room, art studio, or kid's play area and a bathroom. Numerous upgrades. Full list of upgrades available. The landscaped and fenced backyard includes mature trees, perennials, shed, and a single detached garage. Prime central location, on a bird chirping tree-lined street just minutes to downtown, river valley, and folk festival.

Built in 1932

Essential Information

MLS® # E4433560

Price \$375,000



Bedrooms	3
Bathrooms	2.50
Full Baths	2
Half Baths	1
Square Footage	1,056
Acres	0.00
Year Built	1932
Type	Single Family
Sub-Type	Detached Single Family
Style	2 Storey
Status	Active

Community Information

Address	10325 81 Street
Area	Edmonton
Subdivision	Forest Heights (Edmonton)
City	Edmonton
County	ALBERTA
Province	AB
Postal Code	T6A 3K8

Amenities

Amenities	On Street Parking, Deck, Front Porch, Vinyl Windows, Wood Windows, See Remarks, Natural Gas BBQ Hookup
Parking Spaces	2
Parking	Single Garage Detached, Stall

Interior

Interior Features	ensuite bathroom
Appliances	Dryer, Garage Opener, Refrigerator, Stove-Electric, Washer, Curtains and Blinds
Heating	Forced Air-1, Natural Gas
Stories	3
Has Basement	Yes
Basement	Full, Finished

Exterior

Exterior	Wood, Vinyl
Exterior Features	Back Lane, Fenced, Low Maintenance Landscape, Schools, Shopping

	Nearby
Roof	Asphalt Shingles
Construction	Wood, Vinyl
Foundation	Concrete Perimeter

School Information

Elementary	Forest Heights Elementary
Middle	Michaelle-Jean
High	Mc Nally

Additional Information

Date Listed	May 1st, 2025
Zoning	Zone 19

DATA IS DEEMED RELIABLE BUT IS NOT GUARANTEED ACCURATE BY THE REALTORS® ASSOCIATION OF EDMONTON. COPYRIGHT 2025 BY THE REALTORS® ASSOCIATION OF EDMONTON. ALL RIGHTS RESERVED. Trademarks are owned or controlled by the Canadian Real Estate Association (CREA) and identify real estate professionals who are members of CREA (REALTOR®, REALTORS®) and/or the quality of services they provide (MLS®, Multiple Listing Service®)

Listing information last updated on May 1st, 2025 at 9:17pm MDT