

## \$210,000 - 2117 141 Avenue, Edmonton

MLS® #E4432718

**\$210,000**

3 Bedroom, 1.00 Bathroom, 1,157 sqft

Condo / Townhouse on 0.00 Acres

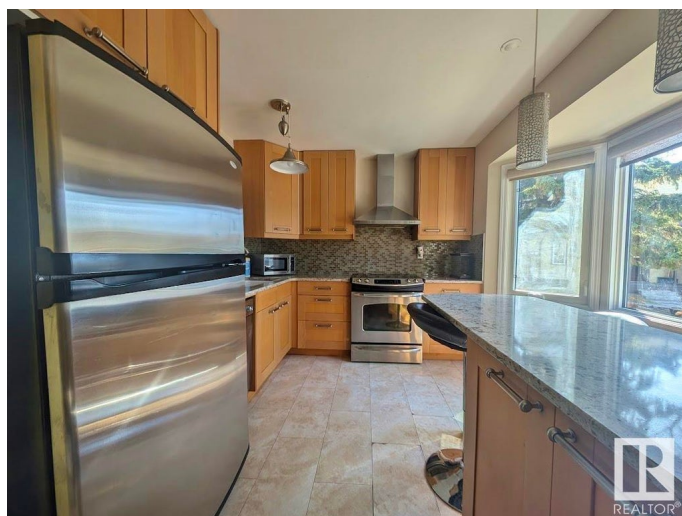
Bannerman, Edmonton, AB

Beautiful condo situated in the quiet neighborhood of Bannerman close to schools, Hermitage Park, shopping, transit and minutes away from walking trails. This 3 bedroom unit has many great features from the open concept living room, spacious bedroom, upgraded kitchen with elegant oak finish cabinets, quartz granite counter tops and stainless steel appliances, formal dining area, spacious foyer, renovated bathroom with soaker tub and a deck for relaxing in your private backyard. This unit also has 2 parking stalls and allows dogs!!

Built in 1979

### Essential Information

MLS® #	E4432718
Price	\$210,000
Bedrooms	3
Bathrooms	1.00
Full Baths	1
Square Footage	1,157
Acres	0.00
Year Built	1979
Type	Condo / Townhouse
Sub-Type	Townhouse
Style	2 Storey
Status	Active



## Community Information

Address	2117 141 Avenue
Area	Edmonton
Subdivision	Bannerman
City	Edmonton
County	ALBERTA
Province	AB
Postal Code	T5Y 1C4

## Amenities

Amenities	Deck, No Smoking Home, Parking-Visitor, See Remarks
Parking Spaces	2
Parking	2 Outdoor Stalls

## Interior

Appliances	Dishwasher-Built-In, Dryer, Refrigerator, Stove-Electric, Washer, Window Coverings
Heating	Forced Air-1, Natural Gas
Stories	2
Has Basement	Yes
Basement	Full, Partially Finished

## Exterior

Exterior	Wood, Stucco
Exterior Features	Fenced, Park/Reserve, Playground Nearby, Public Transportation, Schools, Shopping Nearby, See Remarks
Roof	Asphalt Shingles
Construction	Wood, Stucco
Foundation	Concrete Perimeter

## Additional Information

Date Listed	April 25th, 2025
Days on Market	6
Zoning	Zone 35
Condo Fee	\$426

DATA IS DEEMED RELIABLE BUT IS NOT GUARANTEED ACCURATE BY THE REALTORS® ASSOCIATION OF EDMONTON. COPYRIGHT 2025 BY THE REALTORS® ASSOCIATION OF EDMONTON. ALL RIGHTS RESERVED. Trademarks are owned or controlled by the Canadian Real Estate Association (CREA) and identify real estate professionals who are members of CREA (REALTOR®, REALTORS®) and/or the quality of services they provide (MLS®, Multiple Listing Service®)

Listing information last updated on May 1st, 2025 at 12:47pm MDT