

\$925,000 - 2411 112a Street, Edmonton

MLS® #E4432713

\$925,000

5 Bedroom, 3.50 Bathroom, 2,563 sqft
Single Family on 0.00 Acres

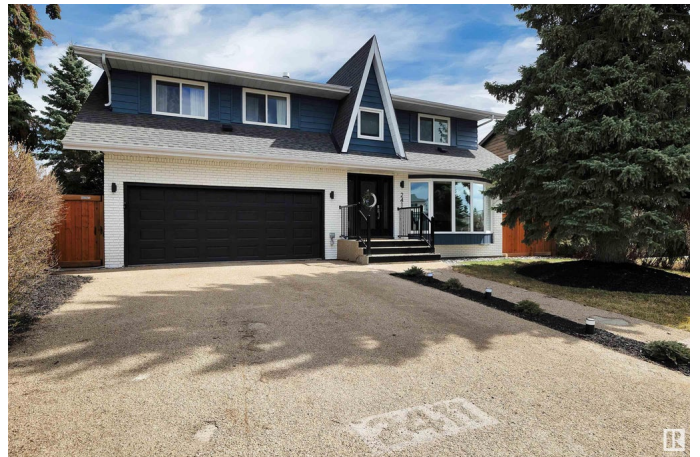
Blue Quill, Edmonton, AB

Welcome home to this extensively renovated and upgraded Ace Lange home in the heart of the beautiful community of Blue Quill with a 3 season in ground pool!!! This home features 5 bedrooms 3.5 bathrooms, a renovated kitchen with granite counter tops, built in pantry, full refrigerator and wall freezer, stainless steel appliances and a built in window seat for dining! The back yard oasis features a new composite deck, new salt water hot tub, maintenance free turf, a gorgeous pool house with a salt water in ground pool with a brand new heater! Upstairs you will find a massive primary bedroom with custom closets and ensuite. 3 other large bedrooms, full bath with dual vanities, renovated laundry room, and a beautiful office/den with its own redone balcony! The newly renovated basement includes a bedroom with an egress window, 3 piece washroom and a massive rec room! Other upgrades include a brand new electrical panel, new roof & windows! 5 min walk to the LRT ! Don't miss out on your new dream home !!

Built in 1979

Essential Information

MLS® #	E4432713
Price	\$925,000



Bedrooms	5
Bathrooms	3.50
Full Baths	3
Half Baths	1
Square Footage	2,563
Acres	0.00
Year Built	1979
Type	Single Family
Sub-Type	Detached Single Family
Style	2 Storey
Status	Active

Community Information

Address	2411 112a Street
Area	Edmonton
Subdivision	Blue Quill
City	Edmonton
County	ALBERTA
Province	AB
Postal Code	T6J 4X4

Amenities

Amenities	Air Conditioner, Hot Tub, No Smoking Home, Pool-Indoor, Pool-Outdoor, Natural Gas BBQ Hookup
Parking	Double Garage Attached
Has Pool	Yes

Interior

Interior Features	ensuite bathroom
Appliances	Air Conditioning-Central, Alarm/Security System, Dishwasher-Built-In, Dryer, Freezer, Garage Opener, Oven-Microwave, Refrigerator, Storage Shed, Stove-Electric, Washer, Window Coverings, Wine/Beverage Cooler, Pool Equipment, Hot Tub
Heating	Forced Air-2, Natural Gas
Fireplace	Yes
Fireplaces	Stone Facing
Stories	3
Has Basement	Yes
Basement	Full, Finished

Exterior

Exterior	Wood, Brick, Metal
Exterior Features	Airport Nearby, Cul-De-Sac, Fenced, Landscaped, Low Maintenance Landscape, Playground Nearby, Schools, Shopping Nearby
Roof	Asphalt Shingles
Construction	Wood, Brick, Metal
Foundation	Concrete Perimeter

School Information

Elementary	Sweet Grass
Middle	Vernon Barford
High	Harry Ainlay

Additional Information

Date Listed	April 25th, 2025
Days on Market	6
Zoning	Zone 16

DATA IS DEEMED RELIABLE BUT IS NOT GUARANTEED ACCURATE BY THE REALTORS® ASSOCIATION OF EDMONTON. COPYRIGHT 2025 BY THE REALTORS® ASSOCIATION OF EDMONTON. ALL RIGHTS RESERVED. Trademarks are owned or controlled by the Canadian Real Estate Association (CREA) and identify real estate professionals who are members of CREA (REALTOR®, REALTORS®) and/or the quality of services they provide (MLS®, Multiple Listing Service®)

Listing information last updated on May 1st, 2025 at 9:17pm MDT