

## **\$689,900 - 9429 100a Street, Edmonton**

MLS® #E4432113

**\$689,900**

5 Bedroom, 3.50 Bathroom, 1,733 sqft  
Single Family on 0.00 Acres

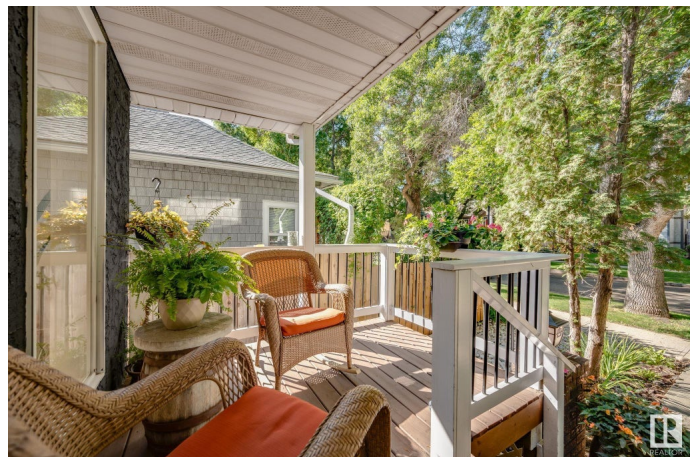
Rosssdale, Edmonton, AB

**FULLY RENOVATED 5 BED HOME  
BACKING ONTO THE RIVER VALLEY  
TRAILS IN ROSSDALE!!** With 10/10 curb  
appeal and tranquil pond this stunning open  
concept living space is sure to impress.  
Drenched in natural light, you are greeted by  
your spacious living room with a gas fireplace  
accentuated by maple hardwood floors  
throughout. Step into your dream kitchen  
complete with an eat up island, cherrywood  
custom cabinets, granite counters and tons of  
space to cook your favourite meals. Head out  
to your peaceful backyard oasis backing  
parkland and endless River Valley views.  
Upstairs you will find a huge primary complete  
with a balcony and 4 pc ensuite. 2 other  
generous sized bedrooms and upper floor  
laundry is perfect for a growing family, home  
office or guest suite. Downstairs you have the  
another full kitchen, rec space, 2 bedrooms  
and 3 pc bath. Surrounded by beauty, minutes  
away from the downtown core, shops, schools,  
playground, local eats and countless  
amenities. Welcome home!

Built in 1988

### **Essential Information**

MLS® #	E4432113
Price	\$689,900



Bedrooms	5
Bathrooms	3.50
Full Baths	3
Half Baths	1
Square Footage	1,733
Acres	0.00
Year Built	1988
Type	Single Family
Sub-Type	Detached Single Family
Style	2 Storey
Status	Active

### Community Information

Address	9429 100a Street
Area	Edmonton
Subdivision	Rossdale
City	Edmonton
County	ALBERTA
Province	AB
Postal Code	T5K 0V4

### Amenities

Amenities	On Street Parking, Deck, Front Porch, See Remarks
Parking Spaces	2
Parking	Parking Pad Cement/Paved

### Interior

Interior Features	ensuite bathroom
Appliances	Dishwasher-Built-In, Dryer, Hood Fan, Oven-Microwave, Washer, Refrigerators-Two, Stoves-Two
Heating	Forced Air-1, Natural Gas
Fireplace	Yes
Fireplaces	Glass Door
Stories	2
Has Basement	Yes
Basement	Full, Finished

### Exterior

Exterior	Wood, Stucco
----------	--------------

Exterior Features	Back Lane, Backs Onto Park/Trees, Fenced, Park/Reserve, Playground Nearby, Ravine View, Schools, Shopping Nearby, See Remarks
Roof	Asphalt Shingles
Construction	Wood, Stucco
Foundation	Concrete Perimeter

### **School Information**

Elementary	Garneau School
Middle	McKernan School
High	Strathcona School

### **Additional Information**

Date Listed	April 22nd, 2025
Days on Market	9
Zoning	Zone 12

DATA IS DEEMED RELIABLE BUT IS NOT GUARANTEED ACCURATE BY THE REALTORS® ASSOCIATION OF EDMONTON. COPYRIGHT 2025 BY THE REALTORS® ASSOCIATION OF EDMONTON. ALL RIGHTS RESERVED. Trademarks are owned or controlled by the Canadian Real Estate Association (CREA) and identify real estate professionals who are members of CREA (REALTOR®, REALTORS®) and/or the quality of services they provide (MLS®, Multiple Listing Service®)

Listing information last updated on May 1st, 2025 at 11:02am MDT