

\$139,900 - 206 42 Alpine Place, St. Albert

MLS® #E4431421

\$139,900

2 Bedroom, 1.00 Bathroom, 857 sqft

Condo / Townhouse on 0.00 Acres

Akinsdale, St. Albert, AB

Immaculate 2 bedroom 1 bathroom 2nd floor apartment backing onto park. In suite laundry, fireplace has been decommissioned so you could go electric or gas. 2 parking stalls 161 energized and 128 not energized.

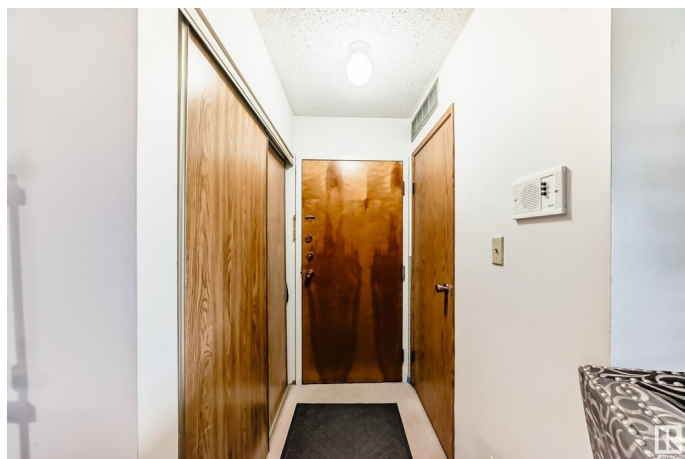
Built in 1982

Essential Information

MLS® #	E4431421
Price	\$139,900
Bedrooms	2
Bathrooms	1.00
Full Baths	1
Square Footage	857
Acres	0.00
Year Built	1982
Type	Condo / Townhouse
Sub-Type	Lowrise Apartment
Style	Single Level Apartment
Status	Active

Community Information

Address	206 42 Alpine Place
Area	St. Albert
Subdivision	Akinsdale
City	St. Albert
County	ALBERTA



Province	AB
Postal Code	T8N 3Y2

Amenities

Amenities	Hot Water Natural Gas, Intercom, No Animal Home, No Smoking Home, Parking-Plug-Ins, Parking-Visitor, Security Door, Vinyl Windows
Parking Spaces	2
Parking	2 Outdoor Stalls

Interior

Interior Features	ensuite bathroom
Appliances	Dishwasher-Built-In, Dryer, Refrigerator, Stove-Electric, Washer
Heating	Forced Air-1, Natural Gas
# of Stories	3
Stories	4
Has Basement	Yes
Basement	None, No Basement

Exterior

Exterior	Wood
Exterior Features	Backs Onto Park/Trees, Fenced, Golf Nearby, Landscaped, Park/Reserve, Playground Nearby, Public Swimming Pool, Public Transportation, Schools, Shopping Nearby
Roof	Asphalt Shingles
Construction	Wood
Foundation	Concrete Perimeter

Additional Information

Date Listed	April 17th, 2025
Days on Market	60
Zoning	Zone 24
Condo Fee	\$490

DATA IS DEEMED RELIABLE BUT IS NOT GUARANTEED ACCURATE BY THE REALTORS® ASSOCIATION OF EDMONTON. COPYRIGHT 2025 BY THE REALTORS® ASSOCIATION OF EDMONTON. ALL RIGHTS RESERVED. Trademarks are owned or controlled by the Canadian Real Estate Association (CREA) and identify real estate professionals who are members of CREA (REALTOR®, REALTORS®) and/or the quality of services they provide (MLS®, Multiple Listing Service®)

Listing information last updated on June 16th, 2025 at 3:02pm MDT