

Courtesy Of Erin Holowach Of ComFree

\$273,999 - 706 10135 Saskatchewan Drive, Edmonton

MLS® #E4430300

\$273,999

2 Bedroom, 1.50 Bathroom, 1,089 sqft
Condo / Townhouse on 0.00 Acres

Strathcona, Edmonton, AB

Offering outstanding location with stunning views! This 2 bed 2 bath corner condo unit is upgraded throughout. Upon entry you are greeted with open concept living. The upgraded kitchen is complete with quartz countertops, working island, abundance of cabinets and stainless appliances. Patio doors lead to a spacious balcony that captures the beauty of the river valley and city skyline. The living & dining area are spacious and great for entertaining. Roomy primary bedroom offers custom built in closets plus 2 piece ensuite bathroom. The second bedroom is perfect for a home office or guest room. The main 4pc bath has been upgraded and in suite laundry completes the space. This unit comes with one underground titled parking spot. Upgrades to building include balcony doors and windows, exterior recently painted. Amenities include swimming pool, work out room + sauna. Close to the University of Alberta, Whyte Ave, Downtown, the beautiful river valley just steps outside. Everything is at your doorstep!

Built in 1973

Essential Information

MLS® #	E4430300
Price	\$273,999
Bedrooms	2



Bathrooms	1.50
Full Baths	1
Half Baths	1
Square Footage	1,089
Acres	0.00
Year Built	1973
Type	Condo / Townhouse
Sub-Type	Apartment High Rise
Style	Single Level Apartment
Status	Active

Community Information

Address	706 10135 Saskatchewan Drive
Area	Edmonton
Subdivision	Strathcona
City	Edmonton
County	ALBERTA
Province	AB
Postal Code	T6E 4Y9

Amenities

Amenities	Detectors Smoke, Exercise Room, No Animal Home, No Smoking Home, Parking-Visitor, Pool-Indoor, Smart/Program. Thermostat, Sauna; Swirlpool; Steam, Secured Parking, Security Door
Parking	Parkade
Has Pool	Yes

Interior

Interior Features	ensuite bathroom
Appliances	Dishwasher-Built-In, Dryer, Garage Opener, Oven-Microwave, Refrigerator, Stove-Electric, Washer, Window Coverings
Heating	Baseboard, Natural Gas
# of Stories	21
Stories	1
Has Basement	Yes
Basement	None, No Basement

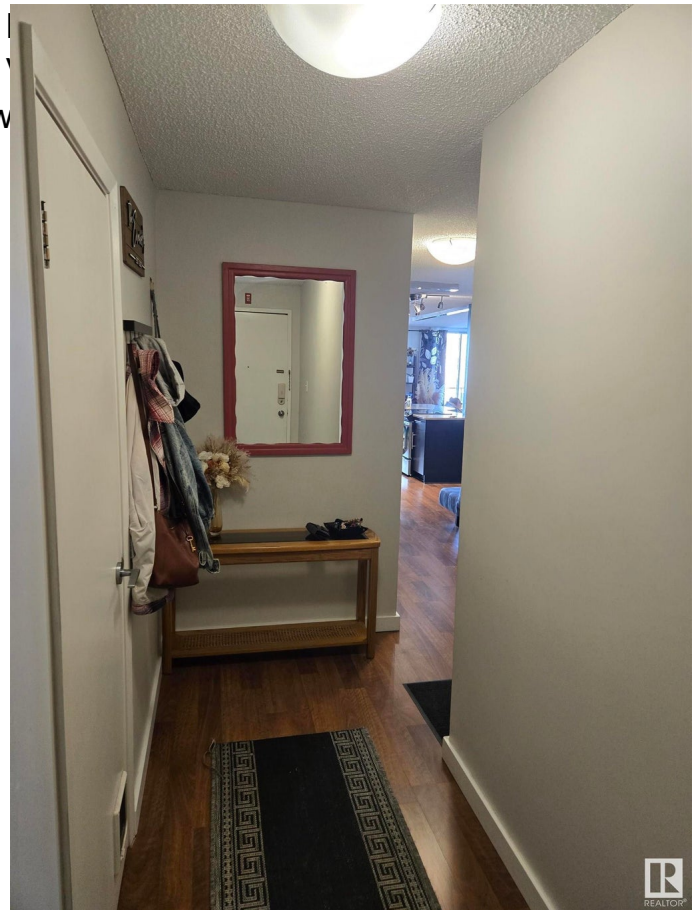
Exterior

Exterior	Concrete, Brick, Stucco
----------	-------------------------

Exterior Features Golf Nearby, Park/Reserve, Public Transportation, River Nearby, View City, View Down
Roof Tar & Gravel
Construction Concrete, Brick, Stucco
Foundation Concrete Perimeter

Additional Information

Date Listed April 11th, 2025
Days on Market 22
Zoning Zone 15
Condo Fee \$778



DATA IS DEEMED RELIABLE BUT IS NOT GUARANTEED ACCURATE BY THE REALTORS® ASSOCIATION OF EDMONTON. COPYRIGHT 2025 BY THE REALTORS® ASSOCIATION OF EDMONTON. ALL RIGHTS RESERVED. Trademarks are owned or controlled by the Canadian Real Estate Association (CREA) and identify real estate professionals who are members of CREA (REALTOR®, REALTORS®) and/or the quality of services they provide (MLS®, Multiple Listing Service®)

Listing information last updated on May 3rd, 2025 at 8:47pm MDT