

\$389,900 - 1316 Windermere Way, Edmonton

MLS® #E4428900

\$389,900

2 Bedroom, 2.00 Bathroom, 953 sqft

Condo / Townhouse on 0.00 Acres

Windermere, Edmonton, AB

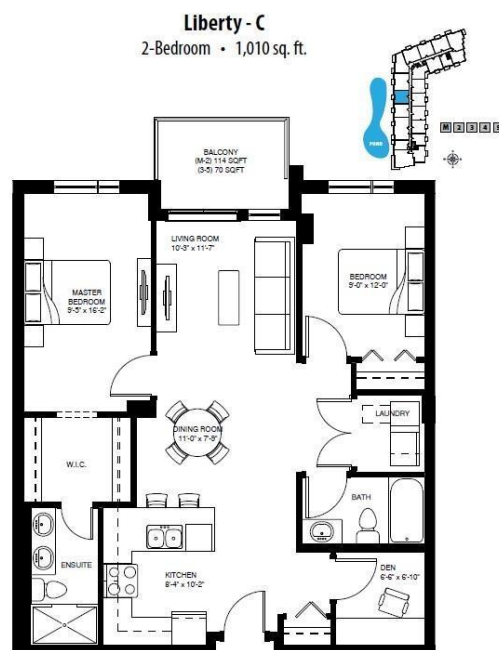
POND VIEW! Welcome to this TWO bedrooms, TWO full baths plus DEN condo unit in LUX at Upper Windermere - a luxury STEEL & CONCRETE condo building in a fabulous area. This popular "Liberty" model offers an open concept and very functional floor plan. Main floor features laminate flooring w/ 9"™ ceilings; A convenient DEN is off entry. Gourmet kitchen has ample ceiling height cabinets, quartz countertops, stainless steel appliances, canopy hood fan & full height mosaic glass backsplash. Primary bedroom comes with a walk-through closet & 4 pc ensuite w/ double sinks. One more good sized bedroom & one 4pc main bath. One titled & heated underground parking. In suite Laundry. A large west facing balcony with great pond view. Luxury condo living with great access to all amenities including public transportation, walking distance to shopping restaurants, banking, onsite daycare & pharmacy, a K-9 school and much more! **builder's plan shows 1,010 sqft**.

Built in 2019

Essential Information

MLS® # E4428900

Price \$389,900



Bedrooms	2
Bathrooms	2.00
Full Baths	2
Square Footage	953
Acres	0.00
Year Built	2019
Type	Condo / Townhouse
Sub-Type	Lowrise Apartment
Style	Single Level Apartment
Status	Active

Community Information

Address	1316 Windermere Way
Area	Edmonton
Subdivision	Windermere
City	Edmonton
County	ALBERTA
Province	AB
Postal Code	T6W 2J3

Amenities

Amenities	Air Conditioner, Carbon Monoxide Detectors, Ceiling 9 ft., Detectors Smoke
Parking	Heated, Underground

Interior

Interior Features	ensuite bathroom
Appliances	Dishwasher-Built-In, Dryer, Microwave Hood Fan, Refrigerator, Stove-Electric, Washer
Heating	Heat Pump, Natural Gas
# of Stories	4
Stories	1
Has Basement	Yes
Basement	None, No Basement

Exterior

Exterior	Concrete, Composition, Metal
Exterior Features	Playground Nearby, Public Transportation, Schools, Shopping Nearby
Roof	Roll Roofing

Construction	Concrete, Composition, Metal
Foundation	Slab

Additional Information

Date Listed	April 3rd, 2025
Days on Market	74
Zoning	Zone 56
Condo Fee	\$473

DATA IS DEEMED RELIABLE BUT IS NOT GUARANTEED ACCURATE BY THE REALTORS® ASSOCIATION OF EDMONTON. COPYRIGHT 2025 BY THE REALTORS® ASSOCIATION OF EDMONTON. ALL RIGHTS RESERVED.Trademarks are owned or controlled by the Canadian Real Estate Association (CREA) and identify real estate professionals who are members of CREA (REALTOR®, REALTORS®) and/or the quality of services they provide (MLS®, Multiple Listing Service®)

Listing information last updated on June 16th, 2025 at 9:47am MDT