

Courtesy Of Neithan Salame and Mason Salame Of RE/MAX River City

\$769,900 - 2436 205 Street, Edmonton

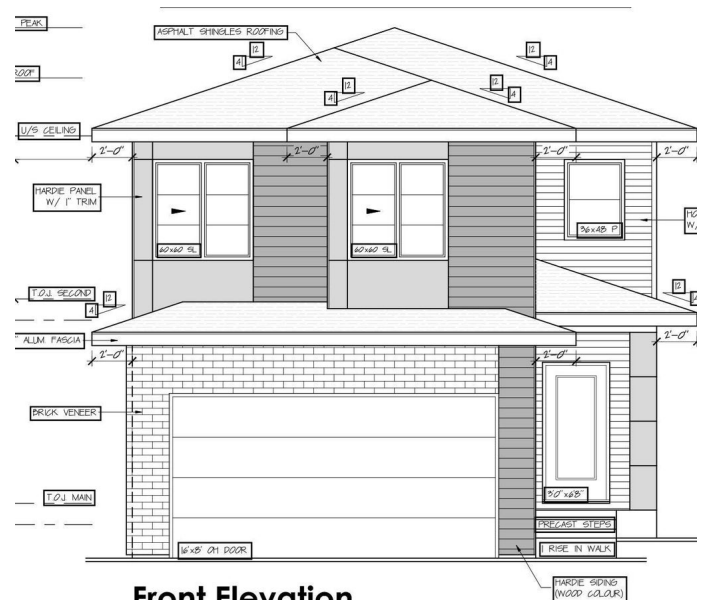
MLS® #E4428590

\$769,900

6 Bedroom, 4.00 Bathroom, 2,284 sqft
Single Family on 0.00 Acres

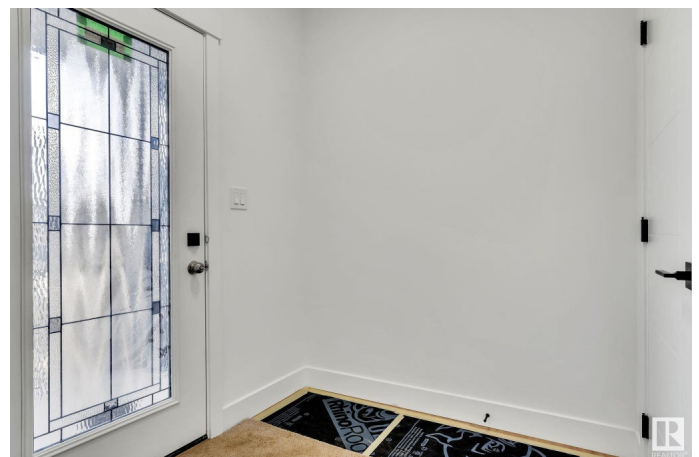
The Uplands, Edmonton, AB

Beautiful fully finished 4 Bedroom plus main floor den and 2 BEDROOM LEGAL BASEMENT SUITE WITH SEPARATE SIDE ENTRANCE. This stunning home featuring a total of 6-bedrooms and 4-bathrooms offers over 3,000 sq. ft. of well-designed space—perfect for a growing family. On the main floor, there's a den and full bath, great for guests or practical living. The open-to-below living area feels bright and spacious, while the chef's kitchen is a great touch. Upstairs, you'll find four large bedrooms, including a primary suite with a beautiful ensuite, plus a bonus room for extra space and convenient second-floor laundry. The basement features a fully finished 2-bedroom legal suite with a private entrance—ideal for rental income or extended family. Located in the sought-after Uplands community, you'll have easy access to schools, shopping, and everything you need, plus quick access to Anthony Henday Drive for a smooth commute.



Front Elevation

Brick: 82 sf



| | |
|----------------|------------------------|
| Bathrooms | 4.00 |
| Full Baths | 4 |
| Square Footage | 2,284 |
| Acres | 0.00 |
| Year Built | 2025 |
| Type | Single Family |
| Sub-Type | Detached Single Family |
| Style | 2 Storey |
| Status | Active |

Community Information

| | |
|-------------|-----------------|
| Address | 2436 205 Street |
| Area | Edmonton |
| Subdivision | The Uplands |
| City | Edmonton |
| County | ALBERTA |
| Province | AB |
| Postal Code | T6M 1N9 |

Amenities

| | |
|----------------|------------------------|
| Amenities | Ceiling 9 ft. |
| Parking Spaces | 4 |
| Parking | Double Garage Attached |

Interior

| | |
|-------------------|---------------------------|
| Interior Features | ensuite bathroom |
| Appliances | See Remarks |
| Heating | Forced Air-1, Natural Gas |
| Fireplace | Yes |
| Fireplaces | Insert |
| Stories | 3 |
| Has Suite | Yes |
| Has Basement | Yes |
| Basement | Full, Finished |

Exterior

| | |
|-------------------|----------------------------------------------------------------------------------------------------------------|
| Exterior | Wood, Vinyl |
| Exterior Features | Golf Nearby, No Back Lane, Playground Nearby, Public Transportation, Schools, Shopping Nearby, Ski Hill Nearby |

| | |
|--------------|--------------------|
| Roof | Asphalt Shingles |
| Construction | Wood, Vinyl |
| Foundation | Concrete Perimeter |

Additional Information

| | |
|----------------|-----------------|
| Date Listed | April 2nd, 2025 |
| Days on Market | 30 |
| Zoning | Zone 57 |

DATA IS DEEMED RELIABLE BUT IS NOT GUARANTEED ACCURATE BY THE REALTORS® ASSOCIATION OF EDMONTON. COPYRIGHT 2025 BY THE REALTORS® ASSOCIATION OF EDMONTON. ALL RIGHTS RESERVED.Trademarks are owned or controlled by the Canadian Real Estate Association (CREA) and identify real estate professionals who are members of CREA (REALTOR®, REALTORS®) and/or the quality of services they provide (MLS®, Multiple Listing Service®)

Listing information last updated on May 2nd, 2025 at 6:02pm MDT