

\$689,900 - 15 1005 Calahoo Road, Spruce Grove

MLS® #E4419841

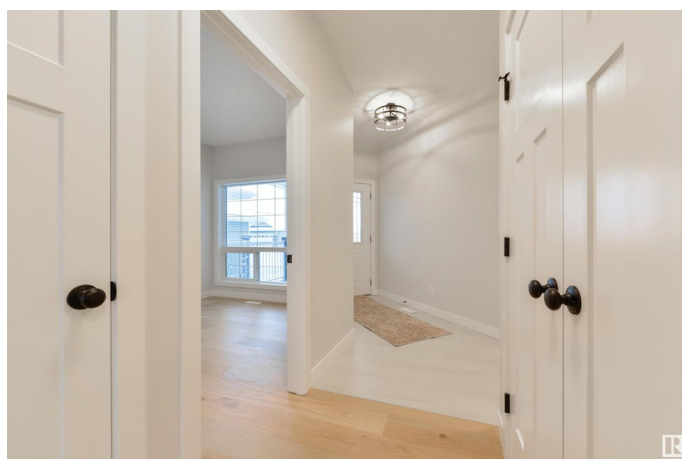
\$689,900

2 Bedroom, 2.50 Bathroom, 1,242 sqft

Condo / Townhouse on 0.00 Acres

Aspen Glen, Spruce Grove, AB

GORGEOUS & BRAND NEW! Centennial Estates is an adult (55+) community catering exclusively to snowbirds, empty-nesters, & those looking for a more relaxed & maintenance-free lifestyle. Showcasing sleek finishes & exquisite details, this bungalow has been beautifully finished to include a covered front porch, 9â€™™ ceilings, engineered-hardwood, a main-floor office/den, dedicated laundry room, a lovely kitchen w/ two-toned full-height cabinetry, QUARTZ counters, pendant lighting, center island, smudge-proof appliances, & separate dinette, a cozy living room w/ corner fireplace & built-in shelving, a king-sized ownerâ€™™s suite w/ walk-in closet & 4pc ensuite, a fully-finished basement, **OVERSIZED** double garage (24â€™™x28â€™™) w/ floor drain & hot/cold water taps, a **SOUTH-FACING** exterior deck, & a ground-level patio. When it comes to adult-living, this community has it all â€“ safety & security behind **GATED** walls, low monthly condo fees, future greenspace, & walking distance to The Links Golf Course, trails & parks.



Built in 2024

Essential Information

MLS® # E4419841

Price \$689,900

Bedrooms	2
Bathrooms	2.50
Full Baths	2
Half Baths	1
Square Footage	1,242
Acres	0.00
Year Built	2024
Type	Condo / Townhouse
Sub-Type	Half Duplex
Style	Bungalow
Status	Active

Community Information

Address	15 1005 Calahoo Road
Area	Spruce Grove
Subdivision	Aspen Glen
City	Spruce Grove
County	ALBERTA
Province	AB
Postal Code	T7X 2T7

Amenities

Amenities	Ceiling 9 ft., Deck, No Animal Home, No Smoking Home, Patio, See Remarks
Parking	Double Garage Attached, Over Sized, See Remarks

Interior

Interior Features	ensuite bathroom
Appliances	Dishwasher-Built-In, Dryer, Garage Control, Garage Opener, Microwave Hood Fan, Refrigerator, Stove-Electric, Washer
Heating	Forced Air-1, Natural Gas
Fireplace	Yes
Fireplaces	Corner
Stories	2
Has Basement	Yes
Basement	Full, Finished

Exterior

Exterior	Wood, Stone, Vinyl
----------	--------------------

Exterior Features	Flat Site, Gated Community, Golf Nearby, Landscaped, Low Maintenance Landscape, Playground Nearby, Schools, Shopping Nearby, See Remarks
Roof	Asphalt Shingles
Construction	Wood, Stone, Vinyl
Foundation	Concrete Perimeter

Additional Information

Date Listed	January 30th, 2025
Days on Market	137
Zoning	Zone 91
Condo Fee	\$127

DATA IS DEEMED RELIABLE BUT IS NOT GUARANTEED ACCURATE BY THE REALTORS® ASSOCIATION OF EDMONTON. COPYRIGHT 2025 BY THE REALTORS® ASSOCIATION OF EDMONTON. ALL RIGHTS RESERVED.Trademarks are owned or controlled by the Canadian Real Estate Association (CREA) and identify real estate professionals who are members of CREA (REALTOR®, REALTORS®) and/or the quality of services they provide (MLS®, Multiple Listing Service®)

Listing information last updated on June 16th, 2025 at 5:32pm MDT